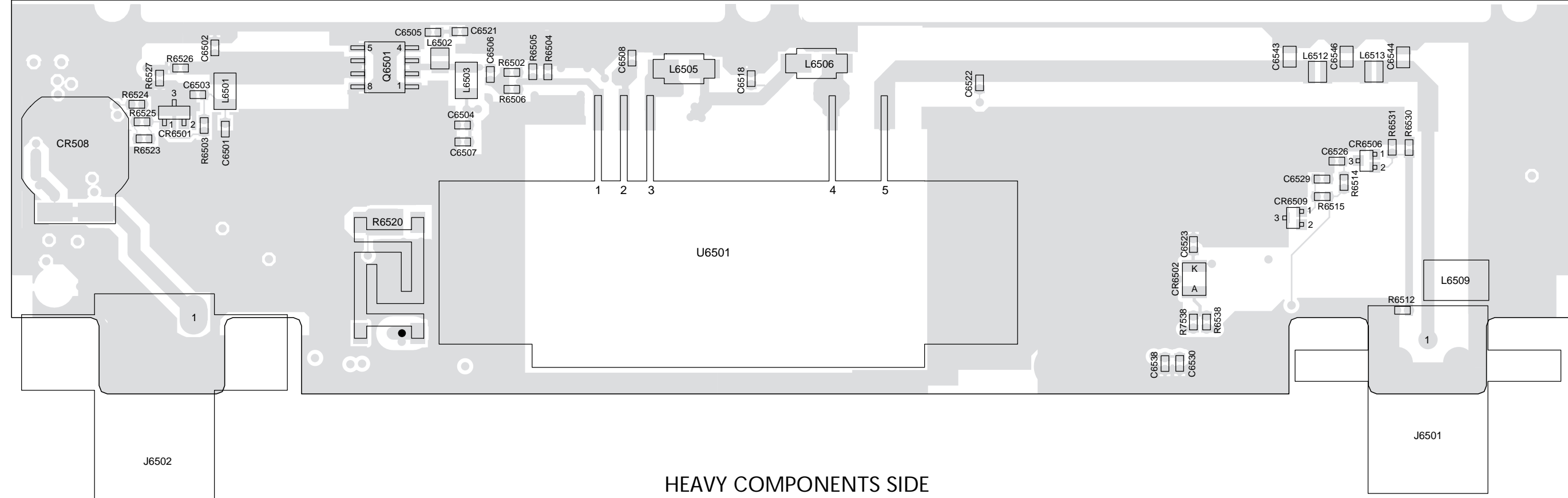
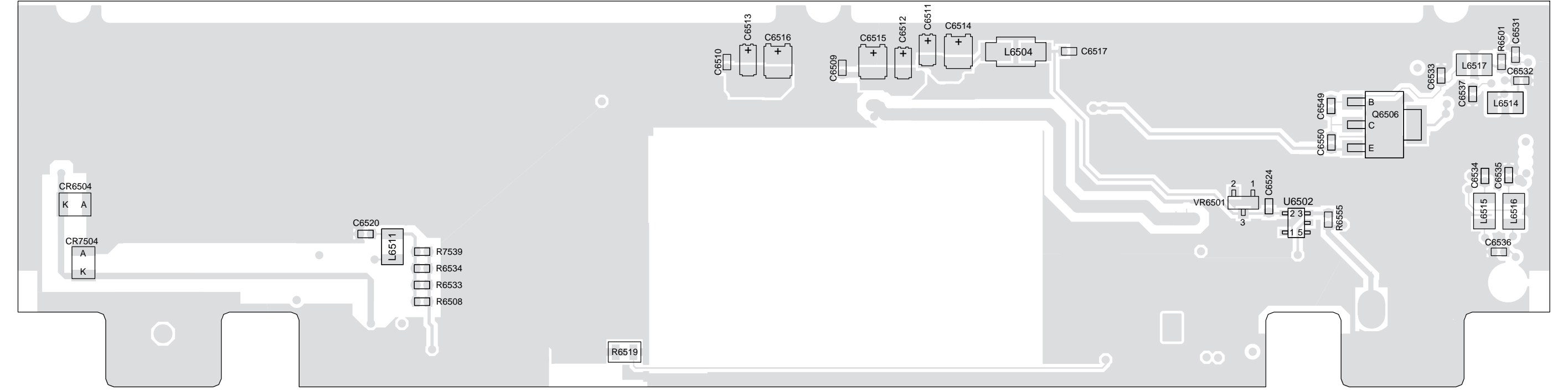


15-WATT POWER AMPLIFIER COMPONENT LOCATIONS



HEAVY COMPONENTS SIDE

MAEPF-26325-O



LIGHT COMPONENTS SIDE

MAEPF-26326-O

12-WATT POWER AMPLIFIER PARTS LIST

| REFERENCE SYMBOL | MOTOROLA PART NUMBER | DESCRIPTION |
|------------------|----------------------|--------------------|
| | | CAPACITORS: |
| C6501 | 2113741F49 | 0.01uF |
| C6502 | 2113740F20 | 5.1pF |
| C6503 | 2113740F41 | 39pF |
| C6504 | 2113740F41 | 39pF |
| C6505 | 2113740F41 | 39pF |
| C6506 | 2113740F41 | 39pF |
| C6507 | 2113741F49 | 0.01uF |
| C6508 | 2113741F49 | 0.01uF |
| C6509 | 2113741F49 | 0.01uF |
| C6510 | 2113741F49 | 0.01uF |
| C6511 | 2311049A01 | 0.1uF |
| C6512 | 2311049A01 | 0.1uF |
| C6513 | 2311049A01 | 0.1uF |
| C6514 | 2311049A08 | 1uF |
| C6515 | 2311049A08 | 1uF |
| C6516 | 2311049A08 | 1uF |
| C6517 | 2113740F41 | 39pF |
| C6518 | 2113740F41 | 39pF |
| C6520 | 2113740F41 | 39pF |

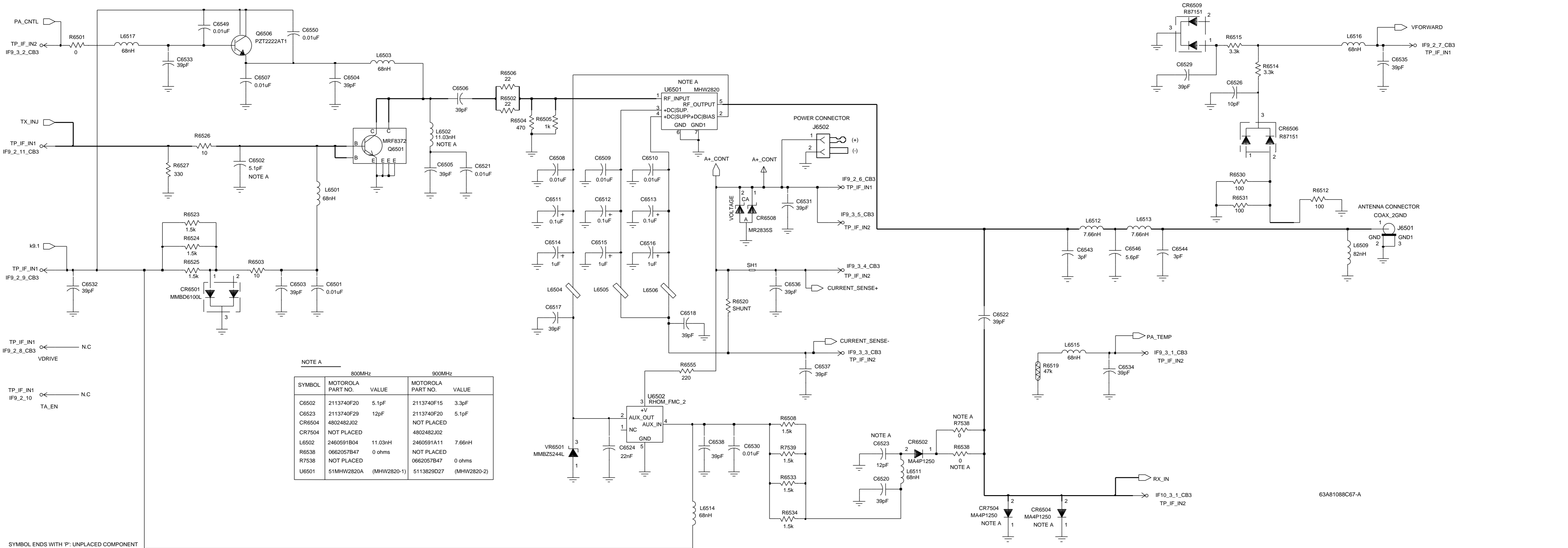
| REFERENCE SYMBOL | MOTOROLA PART NUMBER | DESCRIPTION |
|------------------|----------------------|-------------|
| C6521 | 2113741F49 | 0.01pF |
| C6522 | 2113740F41 | 39pF |
| C6523 | 2113740F29 | 12pF |
| C6524 | 2113743E07 | 0.022uF |
| C6526 | 2113740F27 | 10pF |
| C6529 | 2113740F41 | 39pF |
| C6530 | 2113741F49 | 0.01uF |
| C6531 | 2113740F41 | 39pF |
| C6532 | 2113740F41 | 39pF |
| C6533 | 2113740F41 | 39pF |
| C6534 | 2113740F41 | 39pF |
| C6535 | 2113740F41 | 39pF |
| C6536 | 2113740F41 | 39pF |
| C6537 | 2113740F41 | 39pF |
| C6538 | 2113740F41 | 39pF |
| C6543 | 2113742H25 | 3pF |
| C6544 | 2113742H25 | 3pF |
| C6546 | 2113742H32 | 5.6pF |
| C6549 | 2113741F49 | 0.01uF |
| C6550 | 2113741F49 | 0.01uF |

| REFERENCE SYMBOL | MOTOROLA PART NUMBER | DESCRIPTION |
|------------------|----------------------|---------------------------------|
| CR6501 | 4813833C02 | DIODES: Dual, 70V |
| CR6502 | 4802482J02 | PIN |
| CR6504 | 4802482J02 | PIN |
| CR6506 | 4805218N57 | Dual Schottky |
| CR6508 | 4813832C77 | Over/Reverse Voltage Protection |
| CR6509 | 4805218N57 | Dual Schottky |
| VR6501 | 4813830A27 | Zener, 14V |
| J6501 | 0905901V06 | CONNECTORS: Antenna |
| J6502 | 0905902V03 | Dc Power |
| L6501 | 2462587T13 | 68nH |
| L6502 | 2460591B04 | 11.03nH |
| L6503 | 2462587T13 | 68nH |
| L6504 | 2484657R01 | Ferrite Bead |
| L6505 | 2484657R01 | Ferrite Bead |
| L6506 | 2484657R01 | Ferrite Bead |
| L6509 | 2460591R53 | 82nH |
| L6511 | 2462587T13 | 68nH |
| L6512 | 2460591A11 | 7.6nH |
| L6513 | 2460591A11 | 7.6nH |
| L6514 | 2462587T13 | 68nH |

| REFERENCE SYMBOL | MOTOROLA PART NUMBER | DESCRIPTION |
|------------------|----------------------|----------------------------|
| L6515 | 2462587T13 | 68nH |
| L6516 | 2462587T13 | 68nH |
| L6517 | 2462587T13 | 68nH |
| Q6501 | 4813827A26 | TRANSISTORS: NPN |
| Q6506 | 4813824B01 | NPN |
| R6501 | 0662057B47 | 0 |
| R6502 | 0662057A09 | 22 |
| R6503 | 0662057A01 | 10 |
| R6504 | 0662057A41 | 470 |
| R6505 | 0662057A49 | 1K |
| R6506 | 0662057A09 | 22 |
| R6508 | 0662057A53 | 1.5K |
| R6512 | 0662057A25 | 100 |
| R6514 | 0662057A61 | 3.3K |
| R6515 | 0662057A61 | 3.3K |
| R6519 | 0680361L01 | 50K Thermistor |
| R6520 | 1705603W01 | Special Shunt |
| R6523 | 0662057A53 | 1.5K |
| R6524 | 0662057A53 | 1.5K |
| R6525 | 0662057A53 | 1.5K |
| R6526 | 0662057A01 | 10 |
| R6527 | 0662057A37 | 330 |

| REFERENCE SYMBOL | MOTOROLA PART NUMBER | DESCRIPTION |
|------------------|------------------------|---|
| R6530 | 0662057A25 | 100 |
| R6531 | 0662057A25 | 100 |
| R6533 | 0662057A53 | 1.5K |
| R6534 | 0662057A53 | 1.5K |
| R6538 | 0662057B47 | 0 |
| R6555 | 0662057A33 | 220 |
| U6501 | 51MHW2820A | INTEGRATED CIRCUITS: RF Power Amplifier Module |
| U6502 | 4805921T02 | Switch |
| | 8408497Y01 Issue P2 | PRINTED CIRCUIT BOARDS (For Reference Only): For Kit FLF5950A |

NOTE:
 1. All resistance values are in ohms unless indicated otherwise.
 2. Components shown on component location and schematic diagrams but not included in parts list are not placed.

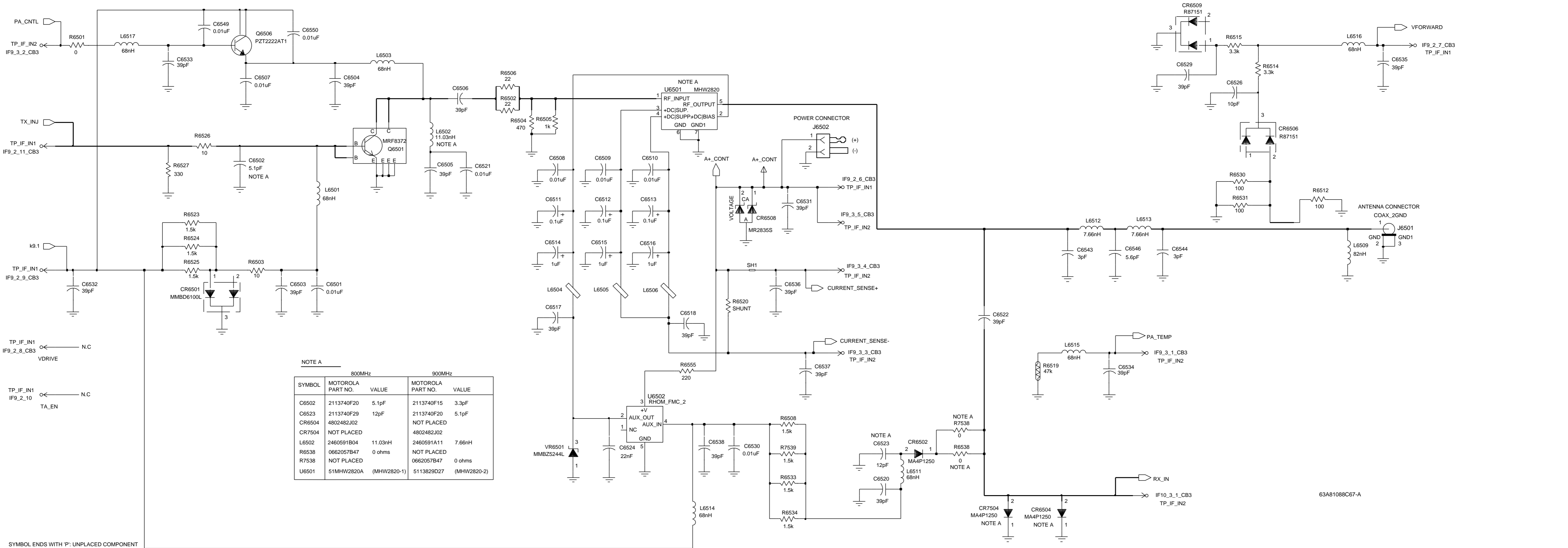


NOTE A

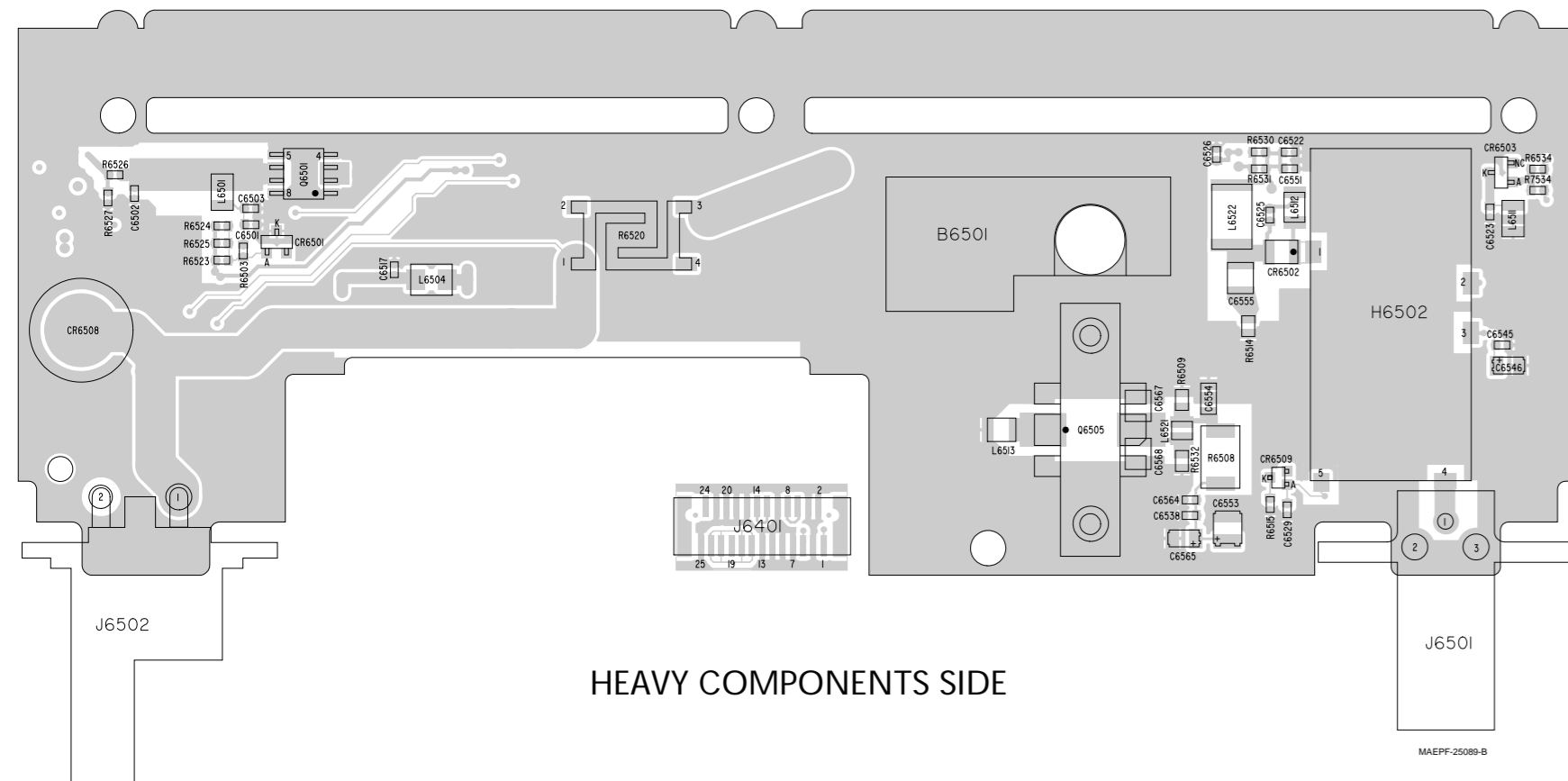
| SYMBOL | MOTOROLA PART NO. | 800MHz | | 900MHz | |
|--------|-------------------|-------------|-------------------|-------------|--|
| | | VALUE | MOTOROLA PART NO. | VALUE | |
| C6502 | 2113740F20 | 5.1pF | 2113740F15 | 3.3pF | |
| C6523 | 2113740F29 | 12pF | 2113740F20 | 5.1pF | |
| CR6504 | 4802482J02 | NOT PLACED | NOT PLACED | | |
| CR7504 | NOT PLACED | | 4802482J02 | | |
| L6502 | 2460591B04 | 11.03nH | 2460591A11 | 7.66nH | |
| R6538 | 0662057B47 | 0 ohms | NOT PLACED | | |
| R7538 | NOT PLACED | | 0662057B47 | 0 ohms | |
| U6501 | 51MHW2820A | (MHW2820-1) | 5113829D27 | (MHW2820-2) | |

SYMBOL ENDS WITH 'P': UNPLACED COMPONENT

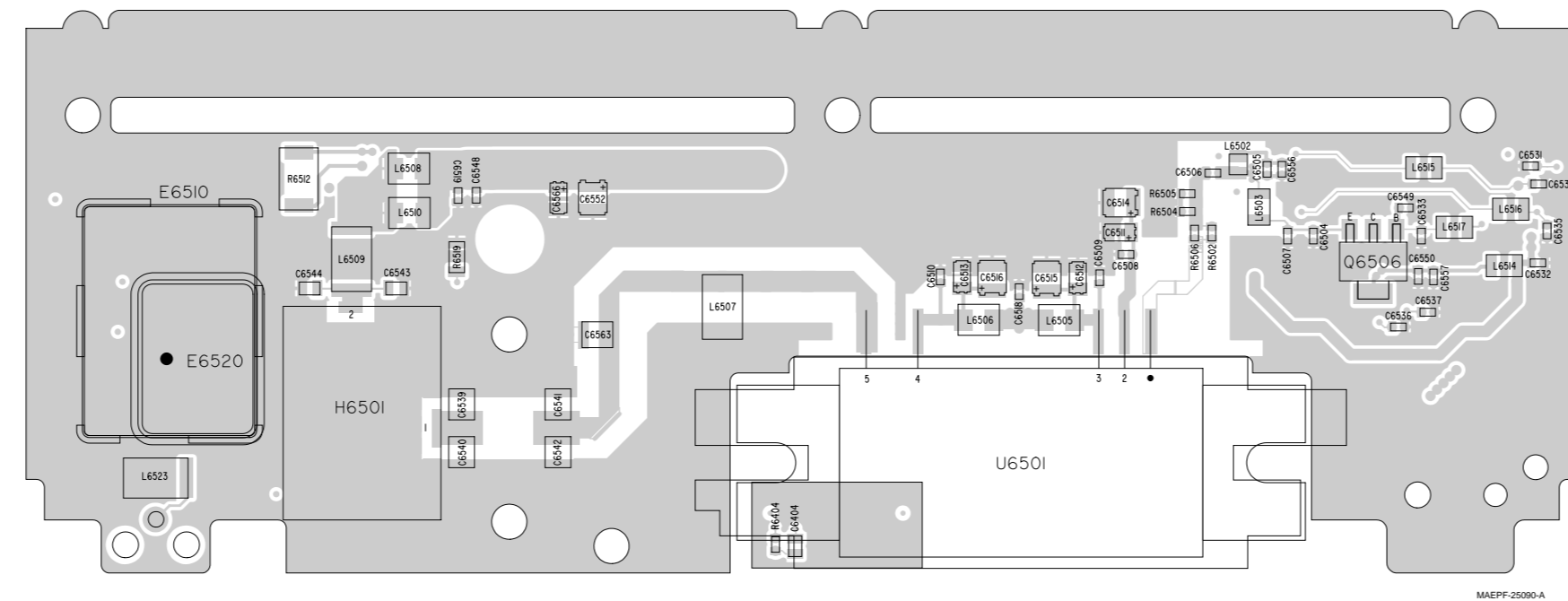
63A81088C67-A



35-WATT POWER AMPLIFIER COMPONENT LOCATIONS



HEAVY COMPONENTS SIDE



LIGHT COMPONENTS SIDE

35-WATT POWER AMPLIFIER PARTS LIST

| REFERENCE SYMBOL | MOTOROLA PART NUMBER | DESCRIPTION |
|------------------|----------------------|--|
| B6501 | 0704512P01 | MISCELLANEOUS PARTS: Heat Sink |
| | | CAPACITORS: |
| C6501 | 2113741F49 | 0.01uF |
| C6502 | 2113740F20 | 5.1pF |
| C6503 | 2113740F41 | 39pF |
| C6504 | 2113740F41 | 39pF |
| C6505 | 2113740F41 | 39pF |
| C6506 | 2113740F41 | 39pF |

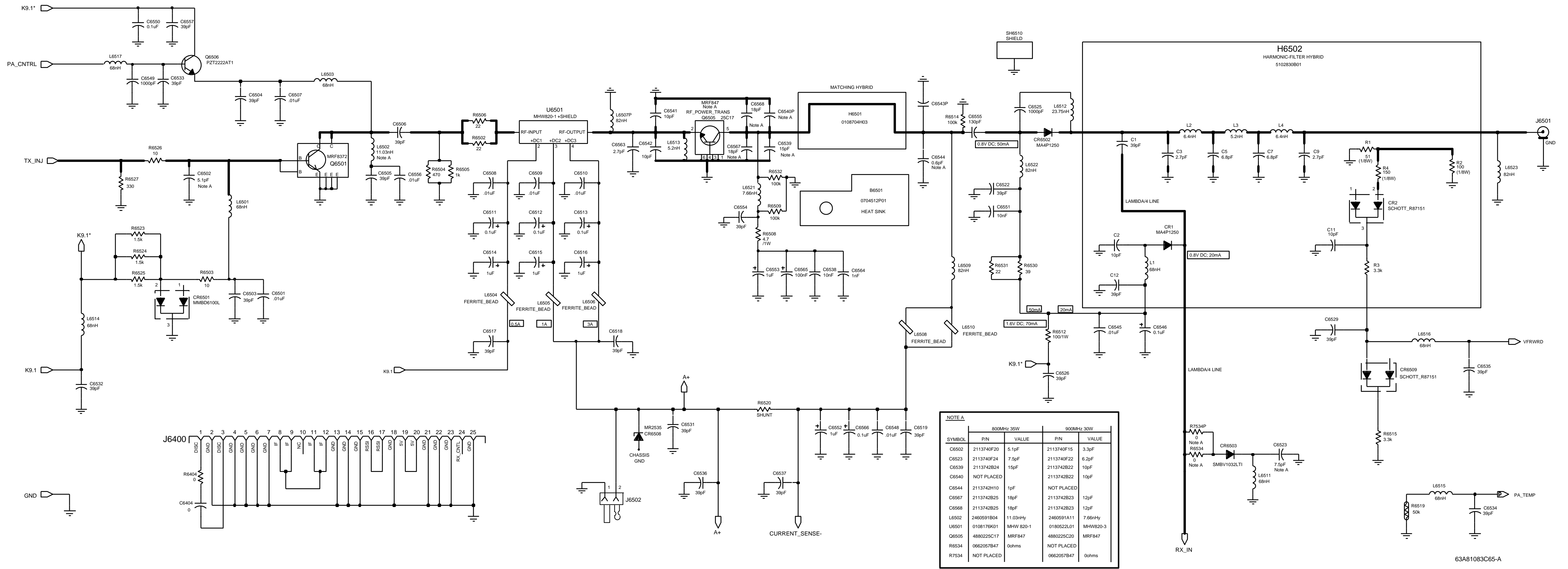
| REFERENCE SYMBOL | MOTOROLA PART NUMBER | DESCRIPTION |
|------------------|----------------------|-------------|
| C6507 | 2113741F49 | 0.01uF |
| C6508 | 2113741F49 | 0.01uF |
| C6509 | 2113741F49 | 0.01uF |
| C6510 | 2113741F49 | 0.01uF |
| C6511 | 2311049A01 | 0.1uF |
| C6512 | 2311049A01 | 0.1uF |
| C6513 | 2311049A01 | 0.1uF |
| C6514 | 2311049A08 | 1uF |
| C6515 | 2311049A08 | 1uF |
| C6516 | 2311049A08 | 1uF |
| C6517 | 2113740F41 | 39pF |
| C6518 | 2113740F41 | 39pF |
| C6519 | 2113740F41 | 39pF |

| REFERENCE SYMBOL | MOTOROLA PART NUMBER | DESCRIPTION |
|------------------|----------------------|--|
| C6522 | 2113740F41 | 39pF |
| C6523 | 2113740F24 | 7.5pF (Note 3) |
| C6523 | 2113740F27 | 10pF (Note 4) |
| C6525 | 2113741F25 | 1000pF |
| C6526 | 2113740F41 | 39pF |
| C6529 | 2113740F41 | 39pF |
| C6531 | 2113740F41 | 39pF |
| C6532 | 2113740F41 | 39pF |
| C6533 | 2113740F41 | 39pF |
| C6534 | 2113740F41 | 39pF |
| C6535 | 2113740F41 | 39pF |
| C6536 | 2113740F41 | 39pF |
| C6537 | 2113740F41 | 39pF |
| C6538 | 2113741F49 | 0.01uF |
| C6539 | 2113742B24 | 15pF |
| C6541 | 2113742B22 | 10pF |
| C6542 | 2113742B22 | 10pF |
| C6544 | 2113742H06 | 0.6 pF |
| C6545 | 2113741F49 | 0.01uF |
| C6546 | 2311049A01 | 0.1uF |
| C6548 | 2113741F49 | 0.01uF |
| C6549 | 2113741F25 | 1000pF |
| C6550 | 2113743K15 | 0.1uF |
| C6551 | 2113741F49 | 0.01uF |
| C6552 | 2311049A08 | 1uF |
| C6554 | 2113740B39 | 39pF |
| C6555 | 211078B45 | 130pF |
| C6556 | 2113741F49 | 0.01uF |
| C6557 | 2113740F41 | 39pF |
| C6563 | 2113742H24 | 2.7pF |
| C6564 | 2113741F25 | 1000pF |
| C6565 | 2311049A01 | 0.1uF |
| C6566 | 2311049A01 | 0.1uF |
| C6567 | 2113742B25 | 18pF |
| C6568 | 2113742B25 | 18pF |
| CR6501 | 4813833C02 | DIODES: MMBD6100L |
| CR6502 | 4802482J02 | MA4P1250 |
| CR6503 | 4805129M96 | Dual (Note 4) |
| CR6503 | 4802482J02 | PIN (Note 5) |
| CR6508 | 4880222R01 | Zener, 28 Volts |
| CR6509 | 4805218N57 | Schottky |
| H6501 | 0108704H03 | SPECIAL MAGNETICS: Matching Hybrid |
| H6502 | 5102830B01 | Harmonic Filter Hybrid |
| J6501 | 0980322L01 | CONNECTORS: Antenna |
| J6502 | 0905902V01 | Dc Power |
| L6501 | 2462587T13 | INDUCTORS: 68nH |
| L6502 | 2460591B04 | 11.03nH |
| L6503 | 2462587T13 | 68nH |
| L6504 | 2484657R01 | Ferrite Bead |
| L6505 | 2484657R01 | Ferrite Bead |
| L6506 | 2484657R01 | Ferrite Bead |
| L6508 | 2484657R01 | Ferrite Bead |
| L6509 | 2460591R53 | 82nH |

| REFERENCE SYMBOL | MOTOROLA PART NUMBER | DESCRIPTION |
|------------------|------------------------|---|
| L6510 | 2484657R01 | Ferrite Bead |
| L6511 | 2462587T13 | 68nH |
| L6512 | 2460591E24 | 23.75nH |
| L6513 | 2460591A01 | 5.2nH |
| L6514 | 2462587T13 | 68nH |
| L6515 | 2462587T13 | 68nH |
| L6516 | 2462587T13 | 68nH |
| L6517 | 2462587T13 | 68nH |
| L6521 | 2460591A11 | 7.6nH |
| L6522 | 2460591R53 | 82nH |
| L6523 | 2460591R53 | 82nH |
| Q6501 | 4813827A26 | TRANSISTORS: MRF8372 (NPN) |
| Q6505 | 4880225C17 | M25C17 (NPN) (Note 6) |
| Q6506 | 4813824B01 | PTZ222AT1 (NPN) |
| R6502 | 0662057A09 | RESISTORS: 22 |
| R6503 | 0662057A01 | 10 |
| R6504 | 0662057A41 | 470 |
| R6505 | 0662057A49 | 1K |
| R6506 | 0662057A09 | 22 |
| R6508 | 0683962T17 | 4.7 |
| R6509 | 0662057G13 | 100K |
| R6512 | 0683962T49 | 100K |
| R6514 | 0662057G13 | 100K |
| R6515 | 0662057A61 | 3.3K |
| R6519 | 0605621T02 | 50K Thermistor |
| R6520 | 1705603W01 | Shunt |
| R6523 | 0662057A53 | 1.5K |
| R6524 | 0662057A53 | 1.5K |
| R6525 | 0662057A53 | 1.5K |
| R6526 | 0662057A01 | 10 |
| R6527 | 0662057A37 | 330 |
| R6530 | 0662057A15 | 39 |
| R6531 | 0662057A09 | 22 |
| R6532 | 0662057G13 | 100K |
| R6534 | 0662057B47 | 0.0 |
| U6501 | 0108176K01 | INTEGRATED CIRCUITS: Power Amplifier Module 800 MP MHW820-1 |
| | 8404994E05 Issue P5 | PRINTED CIRCUIT BOARD (For Reference Only) For Kits FLF5574C, D, E; HUF1189A |

NOTES:

- All resistance values are in ohms unless indicated otherwise.
- This part is used on transceiver board 8404994E05 Revision P5.
- This part is used on transceiver board 8404994E06 Revision P6.
- Replacement of transistor Q6506 requires the use of a special procedure. Refer to section 3-2 in this volume for Q6506 replacement procedure.

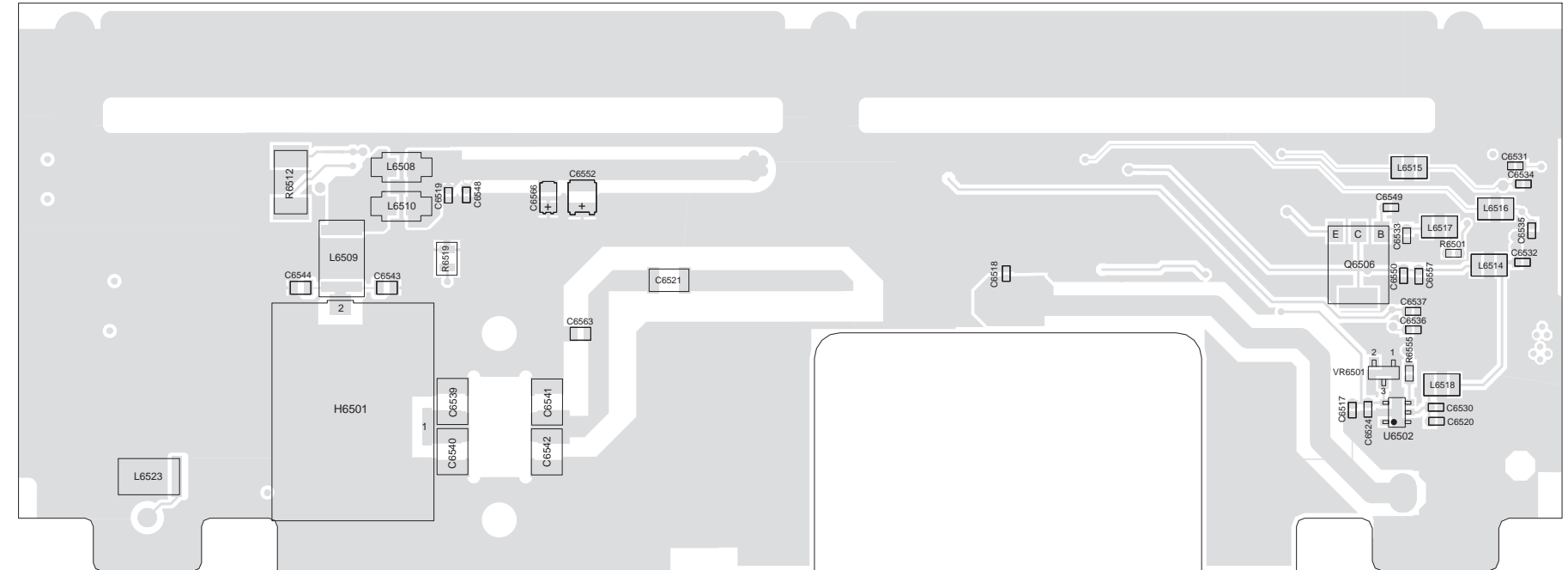
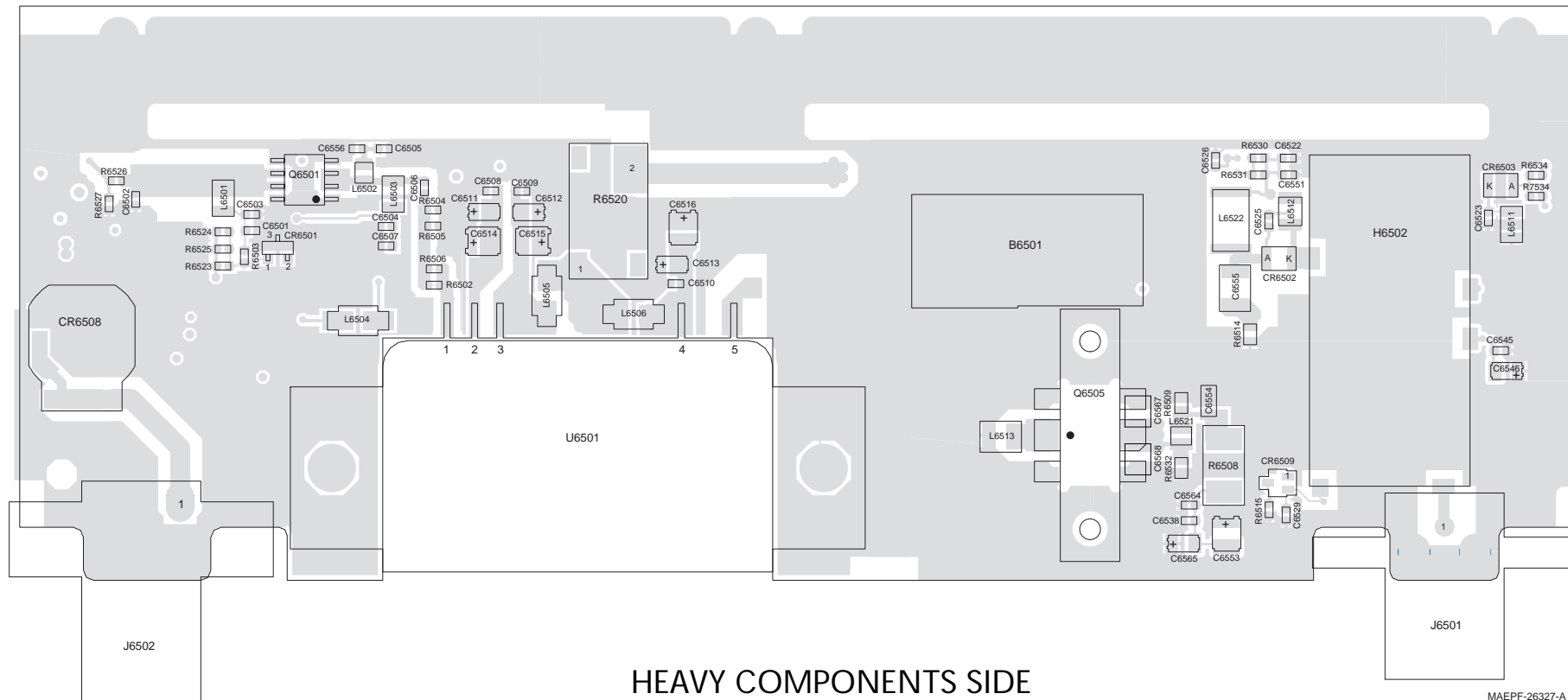


NOTE A

| SYMBOL | P/N | 800MHz 35W | | 900MHz 30W | |
|--------|------------|------------|------------|------------|-----|
| | | VALUE | P/N | VALUE | P/N |
| C6502 | 2113740F20 | 5.1pF | 2113740F15 | 3.3pF | |
| C6523 | 2113740F24 | 7.5pF | 2113740F22 | 6.2pF | |
| C6539 | 2113742B24 | 15pF | 2113742B22 | 10pF | |
| C6540 | NOT PLACED | | 2113742B22 | 10pF | |
| C6544 | 2113742H10 | 1pF | NOT PLACED | | |
| C6567 | 2113742B25 | 18pF | 2113742B23 | 12pF | |
| C6568 | 2113742B25 | 18pF | 2113742B23 | 12pF | |
| L6502 | 2460591B04 | 11.03nHy | 2460591A11 | 7.66nHy | |
| U6501 | 0108176K01 | MHW 820-1 | 0180522L01 | MHW820-3 | |
| Q6505 | 4880225C17 | MRF847 | 4880225C20 | MRF847 | |
| R6534 | 0662057B47 | 0ohms | NOT PLACED | | |
| R7534 | NOT PLACED | | 0662057B47 | 0ohms | |

SYMBOLS ENDING IN 'P' ARE UNPLACED COMPONENTS.

35-WATT POWER AMPLIFIER COMPONENT LOCATIONS



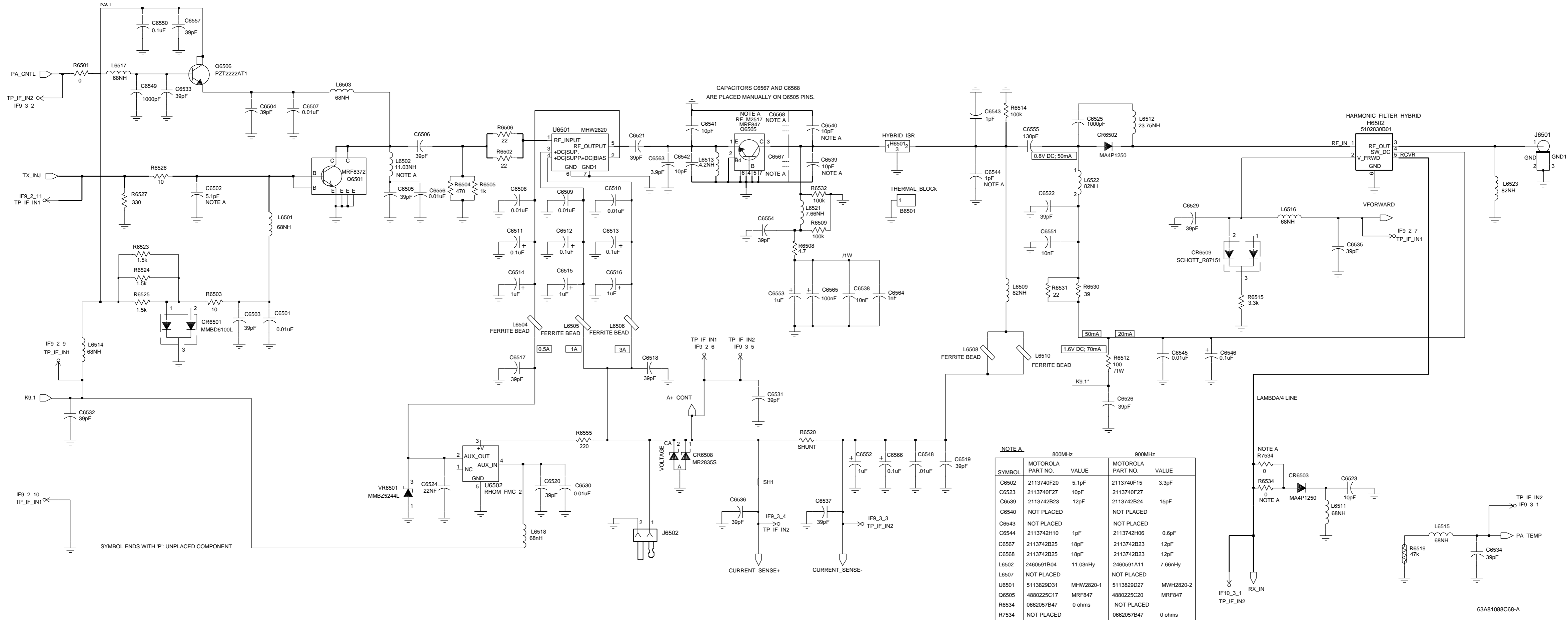
35-WATT POWER AMPLIFIER PARTS LIST

| REFERENCE SYMBOL | MOTOROLA PART NUMBER | DESCRIPTION |
|------------------|----------------------|-----------------------------------|
| B6501 | 0704512P01 | MISCELLANEOUS PARTS: Heat Sink |
| C6501 | 2113741F49 | CAPACITORS: 0.01uF |
| C6502 | 2113740F20 | 5.1pF |
| C6503 | 2113740F41 | 39pF |
| C6504 | 2113740F41 | 39pF |
| C6505 | 2113740F41 | 39pF |
| C6506 | 2113740F41 | 39pF |
| C6507 | 2113741F49 | 0.01uF |
| C6508 | 2113741F49 | 0.01uF |
| C6509 | 2113741F49 | 0.01uF |
| C6510 | 2113741F49 | 0.01uF |
| C6511 | 2311049A01 | 0.1uF |
| C6512 | 2311049A01 | 0.1uF |
| C6513 | 2311049A01 | 0.1uF |
| C6514 | 2311049A08 | 1uF |
| C6515 | 2311049A08 | 1uF |
| C6516 | 2311049A08 | 1uF |
| C6517 | 2113740F41 | 39pF |
| C6518 | 2113740F41 | 39pF |
| C6519 | 2113740F41 | 39pF |
| C6520 | 2113740F41 | 39pF |
| C6521 | 2113742B29 | 39pF |
| C6522 | 2113740F41 | 39pF |
| C6523 | 2113740F27 | 10pF |
| C6524 | 2113743E07 | 0.022uF |
| C6525 | 2113741F25 | 1000pF |
| C6526 | 2113740F41 | 39pF |
| C6529 | 2113740F41 | 39pF |
| C6530 | 2113741F49 | 0.01uF |
| C6531 | 2113740F41 | 39pF |
| C6532 | 2113740F41 | 39pF |
| C6533 | 2113740F41 | 39pF |
| C6534 | 2113740F41 | 39pF |
| C6535 | 2113740F41 | 39pF |
| C6536 | 2113740F41 | 39pF |
| C6537 | 2113740F41 | 39pF |
| C6538 | 2113741F49 | 0.01uF |
| C6539 | 2113742B23 | 12pF |
| C6541 | 2113742B22 | 10pF |
| C6542 | 2113742B22 | 10pF |
| C6544 | 2113742H10 | 1pF |
| C6545 | 2113741F49 | 0.01uF |
| C6546 | 2311049A01 | 0.1uF |
| C6548 | 2113741F49 | 0.01uF |

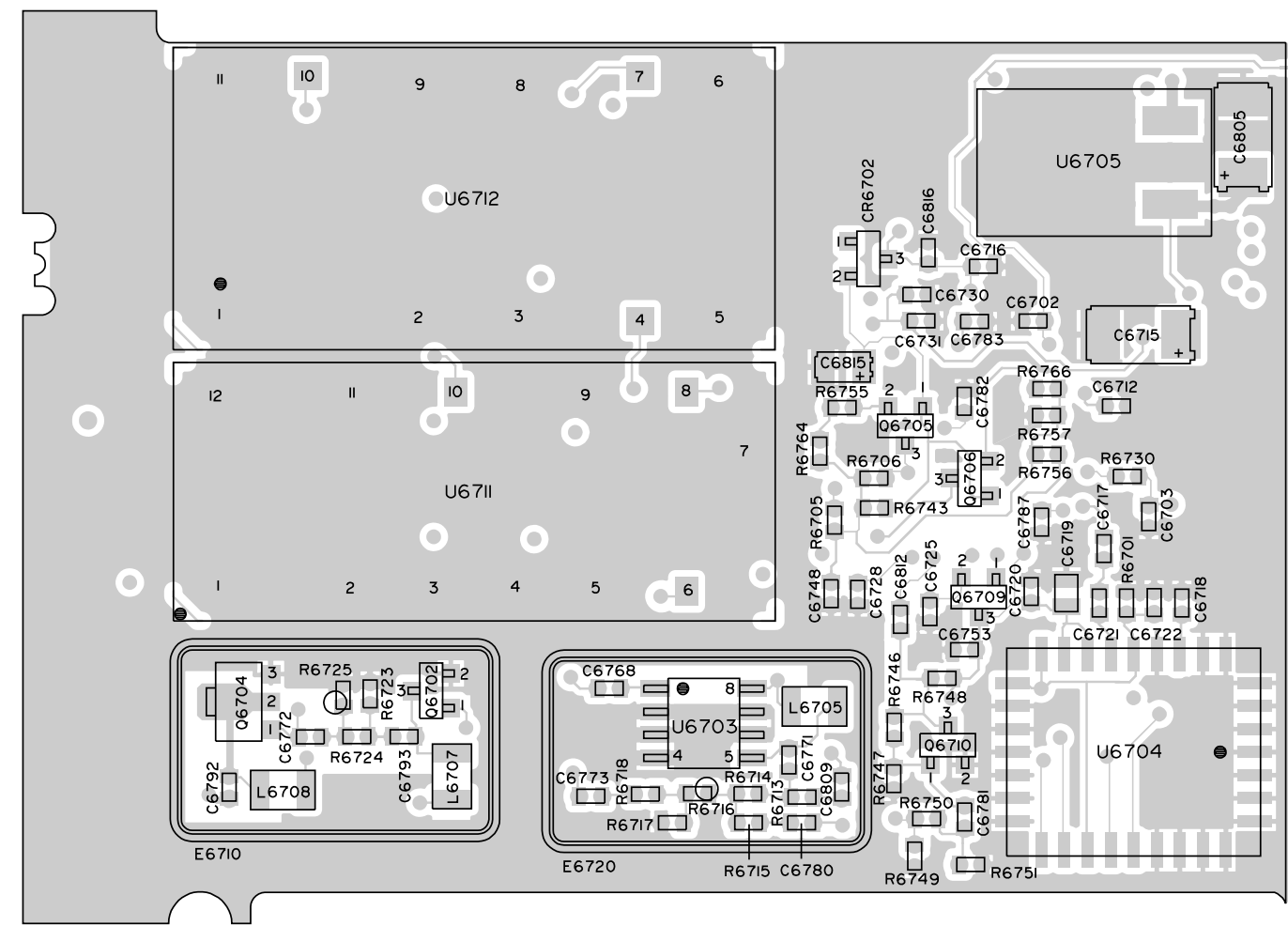
| REFERENCE SYMBOL | MOTOROLA PART NUMBER | DESCRIPTION |
|------------------|----------------------|---------------------------------------|
| C6549 | 2113741F25 | 1000pF |
| C6550 | 2113741F49 | 0.01uF |
| C6551 | 2113741F49 | 0.01uF |
| C6552 | 2311049A08 | 1uF |
| C6553 | 2311049A08 | 1uF |
| C6554 | 2113740B39 | 39pF |
| C6555 | 2111078B45 | 130pF |
| C6556 | 2113741F49 | 0.01uF |
| C6557 | 2113740F41 | 39pF |
| C6563 | 2113742H28 | 3.9pF |
| C6564 | 2113741F25 | 1000pF |
| C6565 | 2311049A01 | 0.1uF |
| C6566 | 2311049A01 | 0.1uF |
| C6567 | 2113742B25 | 18pF |
| C6568 | 2113742B25 | 18pF |
| CR6501 | 4813833C02 | DIODES: Dual 70V |
| CR6502 | 4802482J02 | PIN |
| CR6503 | 4802482J02 | PIN |
| CR6508 | 4813832C77 | Over/Reverse Voltage Protection |
| CR6509 | 4805218N57 | Dual Schottky |
| VR6501 | 4813830A27 | Zener, 14V |
| H6501 | 0108704H03 | SPECIAL MAGNETICS: Matching Hybrid |
| H6502 | 5102830B01 | Harmonic Filter Hybrid |
| J6501 | 0905901V06 | CONNECTORS: Antenna |
| J6502 | 0905902V03 | Dc Power |
| L6501 | 2462587T13 | INDUCTORS: 68nH |
| L6502 | 2460591B04 | 11.03nH |
| L6503 | 2462587T13 | 68nH |
| L6504 | 2484657R01 | Ferrite Bead |
| L6505 | 2484657R01 | Ferrite Bead |
| L6506 | 2484657R01 | Ferrite Bead |
| L6508 | 2484657R01 | Ferrite Bead |
| L6509 | 2460591R53 | 82nH |
| L6510 | 2484657R01 | Ferrite Bead |
| L6511 | 2462587T13 | 68nH |
| L6512 | 2460591E24 | 23.75nH |
| L6513 | 2460591A01 | 5.2nH |
| L6514 | 2462587T13 | 68nH |

| REFERENCE SYMBOL | MOTOROLA PART NUMBER | DESCRIPTION |
|------------------|----------------------|--|
| L6515 | 2462587T13 | 68nH |
| L6516 | 2462587T13 | 68nH |
| L6517 | 2462587T13 | 68nH |
| L6518 | 2460597T13 | 68nH |
| L6521 | 2460591A11 | 7.6nH |
| L6522 | 2460591R53 | 82nH |
| L6523 | 2460591R53 | 82nH |
| Q6501 | 4813827A26 | TRANSISTORS: MRF8372 (NPN) |
| Q6505 | 4880225C17 | M25C17 (NPN) |
| Q6506 | 4813824B01 | PZT222AT1 (NPN) |
| R6501 | 0662057B47 | RESISTORS: 0 |
| R6502 | 0662057A09 | 22 |
| R6503 | 0662057A01 | 10 |
| R6504 | 0662057A41 | 470 |
| R6505 | 0662057A49 | 1K |
| R6506 | 0662057A09 | 22 |
| R6508 | 0683962T17 | 4.7 |
| R6509 | 0662057G13 | 100K |
| R6512 | 0683962T49 | 100 |
| R6514 | 0662057G13 | 100K |
| R6515 | 0662057A61 | 3.3K |
| R6519 | 0680361L01 | 50K Thermistor |
| R6520 | 1705603W01 | Special Shunt |
| R6523 | 0662057A53 | 1.5K |
| R6524 | 0662057A53 | 1.5K |
| R6525 | 0662057A53 | 1.5K |
| R6526 | 0662057A01 | 10 |
| R6527 | 0662057A37 | 330 |
| R6530 | 0662057A15 | 39 |
| R6531 | 0662057A09 | 22 |
| R6532 | 0662057G13 | 100K |
| R6534 | 0662057B47 | 0 |
| R6555 | 0662057A33 | 220 |
| U6501 | 51MHW2820A | INTEGRATED CIRCUITS: Power Amplifier |
| U6502 | 4805921T02 | Switch |
| | 8408537Y01 | Printed Circuit Board (For Reference Only): For Kit FLF5607A |
| | Issue P2 | |

NOTES:
 1. All resistance values are in ohms unless indicated otherwise.
 2. Components shown on parts location and schematic diagrams but not included in parts list are not placed.

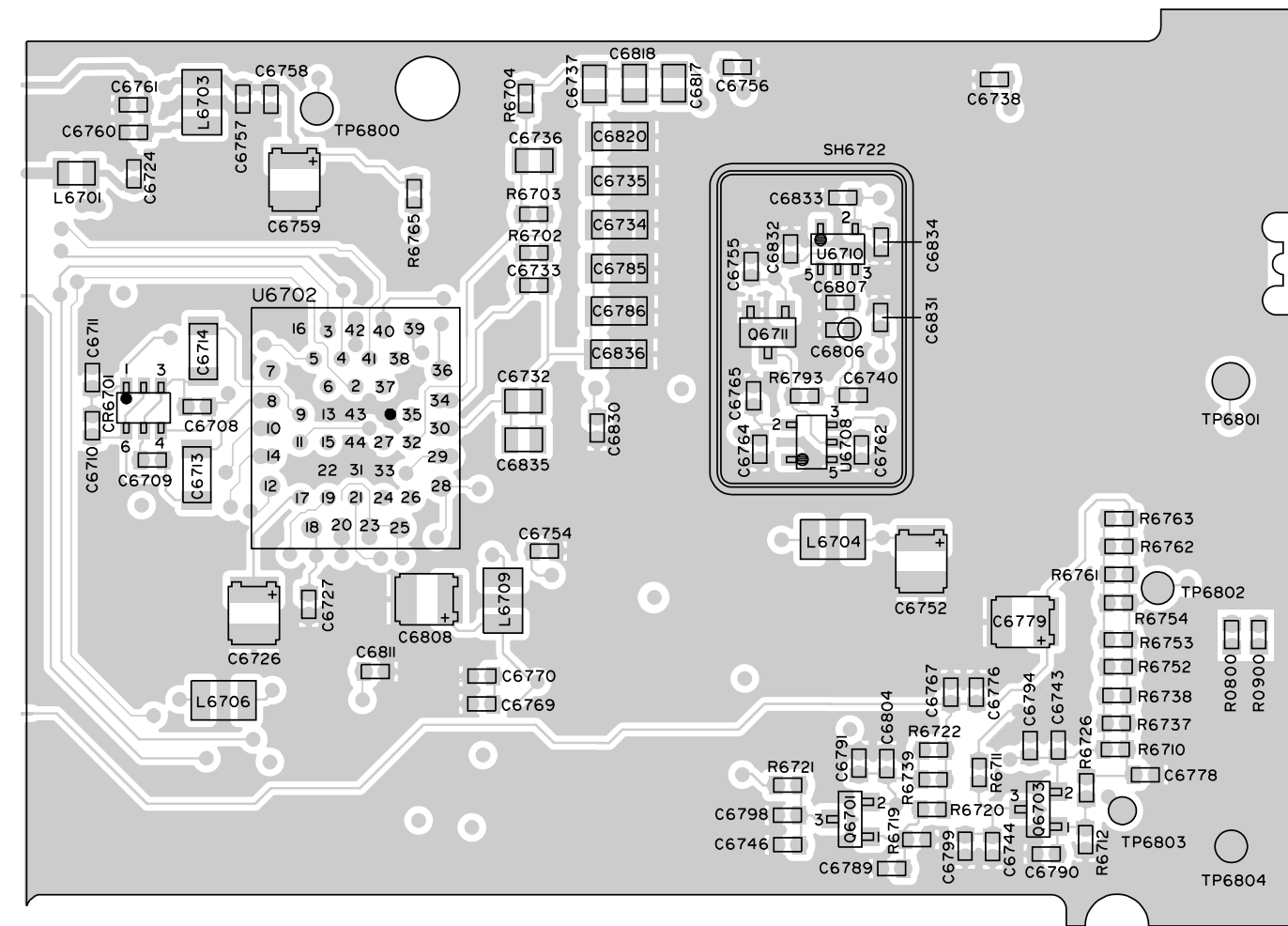


SYNTHESIZER COMPONENT LOCATIONS



MAEPF-25091-O

HEAVY COMPONENTS SIDE



MAEPF-25092-A

LIGHT COMPONENTS SIDE

SYNTHESIZER PARTS LIST

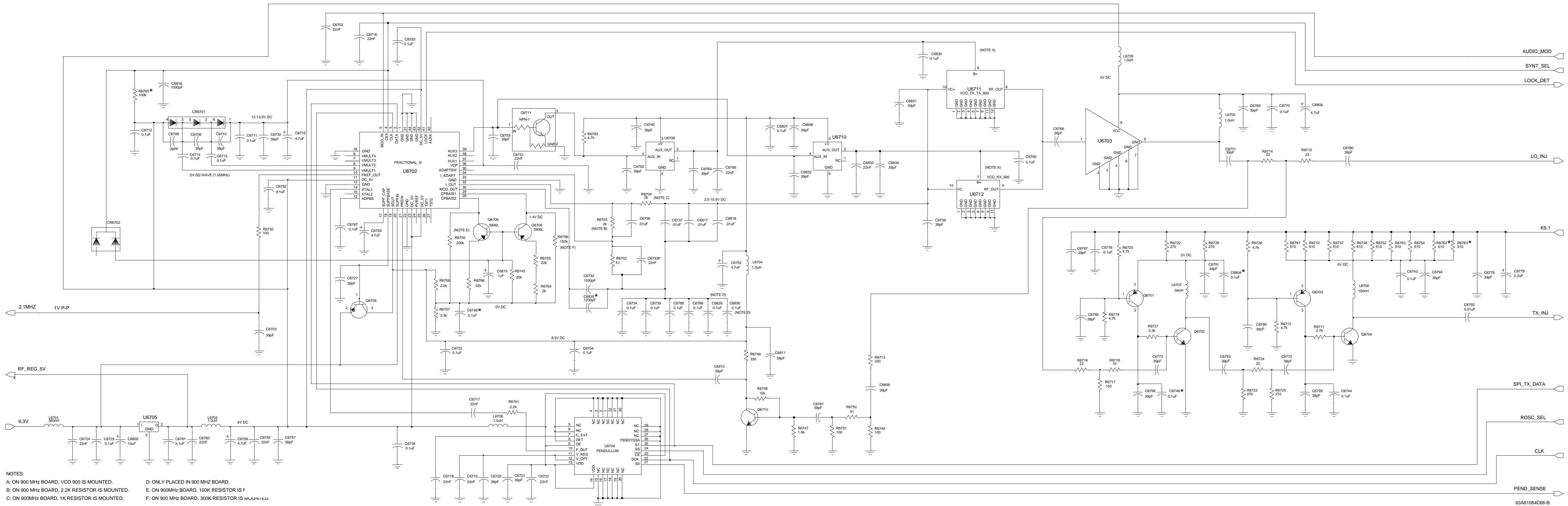
| REFERENCE SYMBOL | MOTOROLA PART NO. | DESCRIPTION |
|------------------|-------------------|--------------------|
| C6702 | 2113743E07 | CAPACITORS: |
| C6703 | 2113740F41 | |
| C6708 | 2113740F41 | |
| C6709 | 2113740F41 | |
| C6710 | 2113740F41 | |
| C6711 | 2113743K15 | |
| C6712 | 2113743K15 | |
| C6713 | 2109720D14 | |
| C6714 | 2109720D14 | |
| C6715 | 2311049A14 | |
| C6716 | 2113743E07 | |
| C6717 | 2113743E07 | |
| C6718 | 2113743E07 | |
| C6719 | 2113741A57 | |
| C6720 | 2113740F41 | |
| C6721 | 2113740F41 | |
| C6722 | 2113743E07 | |
| C6724 | 2113743E07 | |
| C6725 | 2113743K15 | |
| C6726 | 2311049J12 | |
| C6727 | 2113740F41 | |
| C6728 | 2113743K15 | |
| C6730 | 2113740F41 | |
| C6731 | 2113743E07 | |
| C6732 | 2105248W01 | |
| C6734 | 2109720D14 | |
| C6735 | 2109720D14 | |
| C6736 | 2109720D01 | |
| C6737 | 2109720D01 | |
| C6738 | 2113740F41 | |
| C6740 | 2113740F41 | |
| C6743 | 2113743K15 | |
| C6744 | 2311049J12 | |
| C6752 | 2113743K15 | |
| C6753 | 2113743K15 | |
| C6754 | 2113743K15 | |
| C6755 | 2113740F41 | |
| C6756 | 2113743K15 | |
| C6757 | 2113740F41 | |
| C6758 | 2113743E07 | |
| C6759 | 2311049J12 | |
| C6760 | 2113743E07 | |
| C6761 | 2113743K15 | |
| C6762 | 2113740F41 | |
| C6764 | 2113740F41 | |
| C6765 | 2113743E07 | |
| C6767 | 2113740F41 | |
| C6768 | 2113740F41 | |
| C6769 | 2113740F41 | |
| C6770 | 2113743K15 | |
| C6771 | 2113740F41 | |
| C6772 | 2113740F41 | |
| C6773 | 2113740F41 | |
| C6776 | 2113743K15 | |
| C6778 | 2113740F41 | |
| C6779 | 2311049A09 | |
| C6780 | 2113740F41 | |
| C6781 | 2113740F41 | |
| C6782 | 2113743K15 | |

| REFERENCE SYMBOL | MOTOROLA PART NO. | DESCRIPTION | |
|------------------|-------------------|-------------------|---------------------|
| C6783 | 2113743K15 | 0.1uF | |
| C6785 | 2109720D14 | 0.1uF | |
| C6786 | 2109720D14 | 0.1uF | |
| C6787 | 2113743K15 | 0.1uF | |
| C6789 | 2113740F41 | 39pF | |
| C6790 | 2113740F41 | 39pF | |
| C6791 | 2113740F41 | 39pF | |
| C6792 | 2113741F49 | 10nF | |
| C6793 | 2113740F41 | 39pF | |
| C6794 | 2113740F41 | 39pF | |
| C6798 | 2113740F41 | 39pF | |
| C6799 | 2113740F41 | 39pF | |
| C6805 | 2311049J26 | 10uF | |
| C6806 | 2113743K15 | 0.022uF | |
| C6807 | 2113740F41 | 39pF | |
| C6808 | 2311049J12 | 4.7uF | |
| C6809 | 2113740F41 | 39pF | |
| C6811 | 2113740F41 | 39pF | |
| C6812 | 2113740F41 | 39pF | |
| C6815 | 2311049A07 | 1.0uF | |
| C6816 | 2113741F25 | 1nF | |
| C6817 | 2109720D01 | 0.01uF | |
| C6818 | 2109720D01 | 0.01uF | |
| C6830 | 2113743K15 | 0.1uF | |
| C6831 | 2113740F41 | 39pF | |
| C6832 | 2113740F41 | 39pF | |
| C6833 | 2113740F41 | 39pF | |
| C6834 | 2113743E07 | 0.022uF | |
| CR6701 | 4802233J09 | DIODES: | |
| CR6702 | 4813833C02 | | |
| L6701 | 2462587Q44 | INDUCTORS: | |
| L6703 | 2462587T30 | | |
| L6704 | 2462587T30 | | |
| L6705 | 2462587T30 | | |
| L6706 | 2462587T30 | | |
| L6707 | 2462587T12 | | |
| L6708 | 2462587T17 | | |
| L6709 | 2462587T30 | | |
| Q6701 | 4813824A17 | | TRANSISTORS: |
| Q6702 | 4882022N70 | | |
| Q6703 | 4813824A17 | | |
| Q6704 | 4882971R01 | | |
| Q6705 | 4813824A17 | | |
| Q6706 | 4813824A17 | | |
| Q6709 | 4813824A17 | | |
| Q6710 | 4882022N70 | | |
| Q6711 | 4880048M01 | | |
| R0800 | 0662057B47 | RESISTORS: | |
| R6701 | 0662057A57 | | |
| R6702 | 0662057A18 | | |
| R6703 | 0662057A56 | | |
| R6704 | 0662057A56 | | |
| R6705 | 0662057B05 | | |
| R6706 | 0662057B02 | | |

| REFERENCE SYMBOL | MOTOROLA PART NO. | DESCRIPTION |
|------------------|-------------------|-----------------------------|
| R6710 | 0662057A42 | 510 |
| R6711 | 0662057A59 | 2.7K |
| R6712 | 0662057A65 | 4.7K |
| R6713 | 0662057A37 | 330 |
| R6714 | 0662057A09 | 22 |
| R6715 | 0662057A09 | 22 |
| R6716 | 0662057A09 | 22 |
| R6717 | 0662057A29 | 150 |
| R6718 | 0662057A01 | 10 |
| R6719 | 0662057A65 | 4.7K |
| R6720 | 0662057A65 | 4.7K |
| R6721 | 0662057A61 | 3.3K |
| R6722 | 0662057A35 | 270 |
| R6723 | 0662057A35 | 270 |
| R6724 | 0662057A09 | 22 |
| R6725 | 0662057A35 | 270 |
| R6726 | 0662057A65 | 4.7K |
| R6730 | 0662057A25 | 100 |
| R6737 | 0662057A42 | 510 |
| R6738 | 0662057A42 | 510 |
| R6739 | 0662057A35 | 270 |
| R6743 | 0662057A80 | 20K |
| R6746 | 0662057A73 | 10K |
| R6747 | 0662057A53 | 1.5K |
| R6748 | 0662057A37 | 330 |
| R6749 | 0662057A25 | 100 |
| R6750 | 0662057A18 | 51 |
| R6751 | 0662057A25 | 100 |
| R6752 | 0662057A42 | 510 |
| R6753 | 0662057A42 | 510 |
| R6754 | 0662057A42 | 510 |
| R6755 | 0662057A81 | 22K |
| R6756 | 0662057A57 | 2.2K |
| R6757 | 0662057A61 | 3.3K |
| R6761 | 0662057A42 | 510 |
| R6764 | 0662057A56 | 2K |
| R6766 | 0662057A81 | 22K |
| R6793 | 0662057A65 | 4.7K |
| U6702 | 5105625U31 | INTEGRATED CIRCUITS: |
| U6703 | 5105625U27 | |
| U6704 | 5105279V31 | |
| U6705 | 5113816A07 | SHIELDS: |
| U6708 | 4805921T02 | |
| U6710 | 4805921T02 | |
| U6711 | 5102828B01 | |
| U6712 | 5102829B01 | |
| SH6710 | 2602660J01 | TX INJ SHIELD |
| SH6720 | 2602660J01 | TX INJ SHIELD |
| SH6722 | 2602660J01 | TX INJ SHIELD |

NOTES:

- All resistance values are in ohms unless indicated otherwise.
- Components shown on component location and schematic diagrams but not included in parts list are not placed.
- Resistor R0800 is placed only in kits FLF5950A and FLF5607A.



NOTES:
 A: ON 900 MHz BOARD, VCO 900 IS MOUNTED.
 B: ON 900 MHz BOARD, 2.2K RESISTOR IS MOUNTED.
 C: ON 900MHz BOARD, 1K RESISTOR IS MOUNTED.
 D: ONLY PLACED IN 900 MHz BOARD.
 E: ON 900MHz BOARD, 100K RESISTOR IS MOUNTED.
 F: ON 900 MHz BOARD, 300K RESISTOR IS MOUNTED.

Synthesizer (Kits FLF5574D, E, F; FLF5579C, D, E; FLF5600A; FLF5607A; FLF5950A; HUF1188A; HUF1189A)
 Schematic Diagram

NOTES

Table 2: Schematic Diagram Interconnection List

| From | | | | To | | | |
|--------------------|----------|-------------------------|-----------------|----------------|----------|--|-----------------|
| Signal Name | Node No. | Schematic Diagram Title | Publication No. | Signal Name | Node No. | Schematic Diagram Title | Publication No. |
| RX_IN | | Receiver Front End | 68P81080C43-C | RX_IN | | Power Amplifier | 68P81080C43-C |
| LO_INJ | | Receiver Front End | 68P81080C43-C | LO_INJ | | Synthesizer | 68P81080C43-C |
| IF_OUT | | Receiver Front End | 68P81080C43-C | IF_IN | IF5-1-1 | Receiver IF | 68P81080C43-C |
| RF_REG_5V | | Receiver Front End | 68P81080C43-C | | | See List of Common Voltages and Signals at End of This Table | |
| 9.3 | | Receiver Front End | 68P81080C43-C | | | See List of Common Voltages and Signals at End of This Table | |
| K9.1 | | Receiver Front End | 68P81080C43-C | | | See List of Common Voltages and Signals at End of This Table | |
| IF_IN | IF5-1-1 | Receiver IF | 68P81080C43-C | IF_OUT | | Receiver Front End | 68P81080C43-C |
| IF_V_OUT | IF3-2-9 | Receiver IF | 68P81080C43-C | IF_IN | | Receiver Back End | 68P81080C43-C |
| DUPLEX LOCK DETECT | IF1-3-1 | Receiver IF | 68P81080C43-C | | | | |
| DUPLEX LOCK DETECT | IF3-2-11 | Receiver IF | 68P81080C43-C | | | | |
| RX_CNTL1 | IF1-3-6 | Receiver IF | 68P81080C43-C | RX_CNTL1 | | Controller, Power Control/Main Controller | 68P81083C20-B |
| RX_CNTL1 | IF5-2-3 | Receiver IF | 68P81080C43-C | RX_CNTL1 | | Controller, Power Control/Main Controller | 68P81083C20-B |
| RX_CNTL2 | IF1-2-16 | Receiver IF | 68P81080C43-C | | | | |
| DUPLEX_SYN_SELECT | IF1-2-19 | Receiver IF | 68P81080C43-C | DUPLEX_SYN_SEL | | Controller/Main Controller | 68P81083C20-B |
| GND | IF1-2-14 | Receiver IF | 68P81080C43-C | | | | |
| GND | IF1-3-9 | Receiver IF | 68P81080C43-C | | | | |
| GND | IF1-3-7 | Receiver IF | 68P81080C43-C | | | | |

Table 2: Schematic Diagram Interconnection List

| From | | | | To | | | |
|-------------|----------|-------------------------|-----------------|-------------|----------|--|-----------------|
| Signal Name | Node No. | Schematic Diagram Title | Publication No. | Signal Name | Node No. | Schematic Diagram Title | Publication No. |
| CLK | IF1-3-5 | Receiver IF | 68P81080C43-C | | | See List of Common Voltages and Signals at End of This Table | |
| CLK | IF4-3-1 | Receiver IF | 68P81080C43-C | | | See List of Common Voltages and Signals at End of This Table | |
| CLK | IF3-3-2 | Receiver IF | 68P81080C43-C | | | See List of Common Voltages and Signals at End of This Table | |
| SPI_TX_DATA | IF1-3-4 | Receiver IF | 68P81080C43-C | | | See List of Common Voltages and Signals at End of This Table | |
| SPI_TX_DATA | IF3-3-3 | Receiver IF | 68P81080C43-C | | | See List of Common Voltages and Signals at End of This Table | |
| SPI_TX_DATA | IF4-3-9 | Receiver IF | 68P81080C43-C | | | See List of Common Voltages and Signals at End of This Table | |
| ROSC_SEL | IF1-2-13 | Receiver IF | 68P81080C43-C | ROSC_SEL | | Synthesizer | 68P81080C43-C |
| | | | | ROSC_SEL | | Controller/Main Controller | 68P81083C20-B |
| ROSC_SEL | IF4-4-5 | Receiver IF | 68P81080C43-C | ROSC_SEL | | Synthesizer | 68P81080C43-C |
| | | | | ROSC_SEL | | Controller/Main Controller | 68P81083C20-B |
| LOCK_DET | IF1-3-11 | Receiver IF | 68P81080C43-C | LOCK_DET | | Synthesizer | 68P81080C43-C |
| | | | | LOCK_DET | | Controller/Main Controller | 68P81083C20-B |
| LOCK_DET | IF4-4-3 | Receiver IF | 68P81080C43-C | LOCK_DET | | Synthesizer | 68P81080C43-C |
| | | | | LOCK_DET | | Controller/Main Controller | 68P81083C20-B |
| AUDIO_MOD | IF1-2-12 | Receiver IF | 68P81080C43-C | AUDIO_MOD | | Synthesizer | 68P81080C43-C |
| | | | | AUDIO_MOD | | Controller, ASFIC/Audio Block Diagram/Main Controller | 68P81083C20-B |
| AUDIO_MOD | IF4-1-6 | Receiver IF | 68P81080C43-C | AUDIO_MOD | | Synthesizer | 68P81080C43-C |
| | | | | AUDIO_MOD | | Controller, ASFIC/Audio Block Diagram/Main Controller | 68P81083C20-B |

Table 2: Schematic Diagram Interconnection List

| From | | | | To | | | |
|-------------|----------|-------------------------|-----------------|-------------|----------|--|-----------------|
| Signal Name | Node No. | Schematic Diagram Title | Publication No. | Signal Name | Node No. | Schematic Diagram Title | Publication No. |
| SYN_SEL | IF1-3-10 | Receiver IF | 68P81080C43-C | SYN_SEL | | Controller/Main Controller | 68P81083C20-B |
| | | | | | | | |
| SYN_SEL | IF4-3-4 | Receiver IF | 68P81080C43-C | SYN_SEL | | Controller/Main Controller | 68P81083C20-B |
| | | | | SYNT_SEL | | Synthesizer | 68P81080C43-C |
| 2.1MHZ | IF1-3-8 | Receiver IF | 68P81080C43-C | | | See List of Common Voltages and Signals at End of This Table | |
| 2.1MHZ | IF3-3-5 | Receiver IF | 68P81080C43-C | | | See List of Common Voltages and Signals at End of This Table | |
| 2.1MHZ | IF4-2-7 | Receiver IF | 68P81080C43-C | | | See List of Common Voltages and Signals at End of This Table | |
| SQUELCH | IF1-2-17 | Receiver IF | 68P81080C43-C | SQUELCH_IN | | Controller, ASFIC/Audio Block Diagram/Main Controller | 68P81083C20-B |
| | | | | SQUELCH | | Receiver Back End | 68P81080C43-C |
| SQUELCH | IF3-2-16 | Receiver IF | 68P81080C43-C | SQUELCH_IN | | Controller, ASFIC/Audio Block Diagram/Main Controller | 68P81083C20-B |
| | | | | SQUELCH | | Receiver Back End | 68P81080C43-C |
| ZIF_SEL | IF1-2-18 | Receiver IF | 68P81080C43-C | ZIF_SEL | | Controller/Main Controller | 68P81083C20-B |
| ZIF_SEL | IF3-2-1 | Receiver IF | 68P81080C43-C | ZIF_SEL | | Controller/Main Controller | 68P81083C20-B |
| | | | | ZIF_SEL | | Receiver Back End | 68P81080C43-C |
| DISC | IF1-3-2 | Receiver IF | 68P81080C43-C | DISC | | Controller, Hear Clear/Audio Block Diagram/Main Controller | 68P81083C20-B |
| | | | | DISC | | Receiver Back End | 68P81080C43-C |
| | | | | DISC | | Controller, ASFIC/Audio Block Diagram/Main Controller | 68P81083C20-B |
| DISC | IF3-3-4 | Receiver IF | 68P81080C43-C | DISC | | Controller, Hear Clear/Audio Block Diagram/Main Controller | 68P81083C20-B |

Table 2: Schematic Diagram Interconnection List

| From | | | | To | | | |
|-------------|----------|-------------------------|-----------------|-------------|----------|--|-----------------|
| Signal Name | Node No. | Schematic Diagram Title | Publication No. | Signal Name | Node No. | Schematic Diagram Title | Publication No. |
| | | | | DISC | | Receiver Back End | 68P81080C43-C |
| | | | | DISC | | Controller, ASFIC/Audio Block Diagram/Main Controller | 68P81083C20-B |
| RSSI | IF1-3-3 | Receiver IF | 68P81080C43-C | | | See List of Common Voltages and Signals at End of This Table | |
| RSSI | IF3-3-7 | Receiver IF | 68P81080C43-C | | | See List of Common Voltages and Signals at End of This Table | |
| PEND_TEMP | IF4-4-10 | Receiver IF | 68P81080C43-C | | | | |
| 9.3 | IF1-2-15 | Receiver IF | 68P81080C43-C | | | See List of Common Voltages and Signals at End of This Table | |
| 9.3 | IF4-4-2 | Receiver IF | 68P81080C43-C | | | See List of Common Voltages and Signals at End of This Table | |
| 9.3 | IF5-3-2 | Receiver IF | 68P81080C43-C | | | See List of Common Voltages and Signals at End of This Table | |
| RF_REG_5V | IF4-4-8 | Receiver IF | 68P81080C43-C | | | See List of Common Voltages and Signals at End of This Table | |
| RF_REG_5V | IF5-4-4 | Receiver IF | 68P81080C43-C | | | See List of Common Voltages and Signals at End of This Table | |
| RF_REG_5V | IF3-4-8 | Receiver IF | 68P81080C43-C | | | See List of Common Voltages and Signals at End of This Table | |
| IF_IN | | Receiver Back End | 68P81080C43-C | IF_V_OUT | IF3-2-9 | Receiver IF | 68P81080C43-C |
| RF_REG_5V | | Receiver Back End | 68P81080C43-C | | | See List of Common Voltages and Signals at End of This Table | |
| SQUELCH | | Receiver Back End | 68P81080C43-C | SQUELCH | IF1-2-17 | Receiver IF | 68P81080C43-C |
| | | | | SQUELCH | IF3-2-16 | Receiver IF | 68P81080C43-C |
| | | | | SQUELCH_IN | | Controller, ASFIC/Audio Block Diagram/Main Controller | 68P81083C20-B |

Table 2: Schematic Diagram Interconnection List

| From | | | | To | | | |
|-------------|----------|-------------------------|-----------------|-------------|----------|--|-----------------|
| Signal Name | Node No. | Schematic Diagram Title | Publication No. | Signal Name | Node No. | Schematic Diagram Title | Publication No. |
| DISC | | Receiver Back End | 68P81080C43-C | DISC | | Controller, Hear Clear/audio Block Diagram/Main Controller | 68P81083C20-B |
| | | | | DISC | IF1-3-2 | Receiver IF | 68P81080C43-C |
| | | | | DISC | IF3-3-4 | Receiver IF | 68P81080C43-C |
| | | | | DISC | | Controller, ASFIC/Audio Block Diagram/Main Controller | 68P81083C20-B |
| 2.1MHZ | | Receiver Back End | 68P81080C43-C | | | See List of Common Voltages and Signals at End of This Table | |
| ZIF_SEL | | Receiver Back End | 68P81080C43-C | ZIF_SEL | | Controller/Main Controller | 68P81083C20-B |
| | | | | ZIF_SEL | IF1-2-18 | Receiver IF | 68P81080C43-C |
| | | | | ZIF_SEL | IF3-2-1 | Receiver IF | 68P81080C43-C |
| CLK | | Receiver Back End | 68P81080C43-C | | | See List of Common Voltages and Signals at End of This Table | |
| SPI_TX_DATA | | Receiver Back End | 68P81080C43-C | | | See List of Common Voltages and Signals at End of This Table | |
| RSSI | | Receiver Back End | 68P81080C43-C | | | See List of Common Voltages and Signals at End of This Table | |
| PA_CNTL | | Power Amplifier | 68P81080C43-C | PA_CNTL | | Controller, Power Control/Main Controller | 68P81083C20-B |
| TX_INJ | | Power Amplifier | 68P81080C43-C | TX_INJ | | Synthesizer | 68P81080C43-C |
| K9.1 | | Power Amplifier | 68P81080C43-C | | | See List of Common Voltages and Signals at End of This Table | |
| VDRIVE | | Power Amplifier | 68P81080C43-C | VDRIVE | | Controller, Power Control/Main Controller | 68P81083C20-B |
| TA_EN | | Power Amplifier | 68P81080C43-C | | | | |
| A+ | | Power Amplifier | 68P81080C43-C | | | See List of Common Voltages and Signals at End of This Table | |

Table 2: Schematic Diagram Interconnection List

| From | | | | To | | | |
|----------------|----------|-------------------------|-----------------|----------------|----------|--|-----------------|
| Signal Name | Node No. | Schematic Diagram Title | Publication No. | Signal Name | Node No. | Schematic Diagram Title | Publication No. |
| CURRENT_SENSE+ | | Power Amplifier | 68P81080C43-C | CURRENT_SENSE+ | | Controller, Power Control/Main Controller | 68P81083C20-B |
| CURRENT_SENSE- | | Power Amplifier | 68P81080C43-C | CURRENT_SENSE- | | Controller, Power Control/Main Controller | 68P81083C20-B |
| VFORWARD | | Power Amplifier | 68P81080C43-C | V_FORWARD | | Controller, Power Control/Main Controller | 68P81083C20-B |
| PA_TEMP | | Power Amplifier | 68P81080C43-C | PA_TEMP | | Controller, Power Control/Main Controller | 68P81083C20-B |
| RX_IN | | Power Amplifier | 68P81080C43-C | RX_IN | | Receiver Front End | 68P81080C43-C |
| 2.1MHZ | | Synthesizer | 68P81080C43-C | | | See List of Common Voltages and Signals at End of This Table | |
| RF_REG_5V | | Synthesizer | 68P81080C43-C | | | See List of Common Voltages and Signals at End of This Table | |
| 9.3V | | Synthesizer | 68P81080C43-C | | | See List of Common Voltages and Signals at End of This Table | |
| AUDIO_MOD | | Synthesizer | 68P81080C43-C | AUDIO_MOD | IF1-2-12 | Receiver IF | 68P81080C43-C |
| | | | | AUDIO_MOD | IF4-1-6 | Receiver IF | 68P81080C43-C |
| | | | | AUDIO_MOD | | Controller, ASFIC/audio Block Diagram/Main Controller | 68P81083C20-B |
| SYNT_SEL | | Synthesizer | 68P81080C43-C | SYN_SEL | IF1-3-10 | Receiver IF | 68P81080C43-C |
| | | | | SYN_SEL | IF4-3-4 | Receiver IF | 68P81080C43-C |
| | | | | SYN_SEL | | Controller/Main Controller | 68P81083C20-B |
| LOCK_DET | | Synthesizer | 68P81080C43-C | LOCK_DET | | Controller/Main Controller | 68P81083C20-B |
| | | | | LOCK_DET | IF1-3-11 | Receiver IF | 68P81080C43-C |
| | | | | LOCK_DET | IF4-4-3 | Receiver IF | 68P81080C43-C |
| LO_INJ | | Synthesizer | 68P81080C43-C | LO_INJ | | Receiver Front End | 68P81080C43-C |

Table 2: Schematic Diagram Interconnection List

| From | | | | To | | | |
|-------------|----------|---|-----------------|-------------|----------|--|-----------------|
| Signal Name | Node No. | Schematic Diagram Title | Publication No. | Signal Name | Node No. | Schematic Diagram Title | Publication No. |
| K9.1 | | Synthesizer | 68P81080C43-C | | | See List of Common Voltages and Signals at End of This Table | |
| TX_INJ | | Synthesizer | 68P81080C43-C | TX_INJ | | Power Amplifier | 68P81080C43-C |
| SPI_TX_DATA | | Synthesizer | 68P81080C43-C | | | See List of Common Voltages and Signals at End of This Table | |
| ROSC_SEL | | Synthesizer | 68P81080C43-C | ROSC_SEL | IF1-2-13 | Receiver IF | 68P81080C43-C |
| | | | | ROSC_SEL | IF4-4-5 | Receiver IF | 68P81080C43-C |
| | | | | ROSC_SEL | | Controller/Main Controller | 68P81083C20-B |
| CLK | | Synthesizer | 68P81080C43-C | | | See List of Common Voltages and Signals at End of This Table | |
| PEND_SENSE | | Synthesizer | 68P81080C43-C | | | | |
| VDRIVE | | Controller, Power Control/ MainController | 68P81083C20-B | VDRIVE | | Power Amplifier | 68P81080C43-C |
| PWR_RANGE | | Controller, Power Control/ MainController | 68P81083C20-B | PWR_RANGE | | Controller/Main Controller | 8P81083C20-B |
| V_FORWARD | | Controller, Power Control/ MainController | 68P81083C20-B | VFORWARD | | Power Amplifier | 68P81080C43-C |
| VFWD_BUF | | Controller, Power Control/ MainController | 68P81083C20-B | VFWD_BUF | | Audio PA & Voltage Regulators | 68P81083C20-B |
| VSUM | | Controller, Power Control/ Main Controller | 68P81083C20-B | VSUM | | Audio PA & Voltage Regulators | 68P81083C20-B |
| CLK | | Controller, Power Control/ MainController | 68P81083C20-B | | | See List of Common Voltages and Signals at End of This Table | |
| DA_SEL | | Controller, Power Control/ MainController | 68P81083C20-B | DA_SEL | | Controller/Main Controller | 68P81083C20-B |
| SPI_TX_DATA | | Controller, Power Control/ MainController | 68P81083C20-B | | | See List of Common Voltages and Signals at End of This Table | |

Table 2: Schematic Diagram Interconnection List

| From | | | | To | | | |
|--------------------|----------|---|-----------------|--------------------|----------|---|-----------------|
| Signal Name | Node No. | Schematic Diagram Title | Publication No. | Signal Name | Node No. | Schematic Diagram Title | Publication No. |
| TEMP_GND | | Controller, Power Control/ MainController | 68P81083C20-B | | | | |
| CURRENT_SE NSE+ | | Controller, Power Control/ Main Controller | 68P81083C20-B | CURRENT_ SENSE+ | | Power Amplifier | 68P81080C43-C |
| CURRENT_SE NSE- | | Controller, Power Control/ MainController | 68P81083C20-B | CURRENT_ SENSE- | | Power Amplifier | 68P81080C43-C |
| PA_TEMP | | Controller, Power Control/ MainController | 68P81083C20-B | PA_TEMP | | Power Amplifier | 68P81080C43-C |
| PA_DIS | | Controller, Power Control/ MainController | 68P81083C20-B | PA_DIS | | Controller/Main Controller | 68P81083C20-B |
| K9.1_ENB | | Controller, Power Control/ MainController | 68P81083C20-B | K9.1_ENB | | Controller/Main Controller | 68P81083C20-B |
| 9.3V | | Controller, Power Control/ MainController | 68P81083C20-B | | | See List of Common Voltages and Signals at End of This Table | |
| SW_B+ | | Controller, Power Control/ MainController | 68P81083C20-B | | | See List of Common Voltages and Signals at End of This Table | |
| +5V | | Controller, Power Control/ MainController | 68P81083C20-B | | | See List of Common Voltages and Signals at End of This Table | |
| PA_CNTL_LIM | | Controller, Power Control/ MainController | 68P81083C20-B | | | | |
| PA_CNTL | | Controller, Power Control/ MainController | 68P81083C20-B | PA_CNTL | | Power Amplifier | 68P81080C43-C |
| TEMP | | Controller, Power Control/ MainController | 68P81083C20-B | TEMP | | Controller/Main Controller | 68P81083C20-B |
| RX_CNTL1 | | Controller, Power Control/Main Controller | 68P81083C20-B | RX_CNTL1 | IF1-3-6 | Receiver IF | 68P81080C43-C |
| | | | | RX_CNTL1 | IF5-2-3 | Receiver IF | 68P81080C43-C |
| K9.1V | | Controller, Power Control/ MainController | 68P81083C20-B | | | See List of Common Voltages and Signals at End of This Table | |

Table 2: Schematic Diagram Interconnection List

| From | | | | To | | | |
|--------------------|----------|--|-----------------|--------------------|----------|---|-----------------|
| Signal Name | Node No. | Schematic Diagram Title | Publication No. | Signal Name | Node No. | Schematic Diagram Title | Publication No. |
| A+_CONT | | Audio PA & Voltage Regulators/ Controller Interface | 68P81083C20-B | | | See List of Common Voltages and Signals at End of This Table | |
| UNSW_5V | | Audio PA & Voltage Regulators | 68P81083C20-B | UNSW_+5V | | Controller, Emergency Ignition/ Controller Interface/Main Controller | 68P81083C20-B |
| CL_UNSW_5V | | Audio PA & Voltage Regulators | 68P81083C20-B | | | | |
| +5V | | Audio PA & Voltage Regulators | 68P81083C20-B | | | See List of Common Voltages and Signals at End of This Table | |
| SW_B+ | | Audio PA & Voltage Regulators | 68P81083C20-B | | | See List of Common Voltages and Signals at End of This Table | |
| AUPA_EN | | Audio PA & Voltage Regulators | 68P81083C20-B | AUPA_EN | | Controller/Main Controller | 68P81083C20-B |
| RX_AUDIO | | Audio PA & Voltage Regulators | 68P81083C20-B | RX_AUDIO | | Controller, ASFIC/Audio Block Diagram/Main Controller | 68P81083C20-B |
| SPKR+ | | Audio PA & Voltage Regulators/ Controller Interface | 68P81083C20-B | SPKR+ | J0403-1 | Controller Interface | 68P81083C20-B |
| SPKR- | | Audio PA & Voltage Regulators/ Controller Interface | 68P81083C20-B | SPKR- | J0403-3 | Controller Interface | 68P81083C20-B |
| | | | | | J0405-2 | Controller Interface | 68P81083C20-B |
| A+ | | Audio PA & Voltage Regulators | 68P81083C20-B | | | See List of Common Voltages and Signals at End of This Table | |
| B+_ON_OFF | | Audio PA & Voltage Regulators/ Controller Interface | 68P81083C20-B | B+_ON_OFF | | Controller, Emergency Ignition/ Controller Interface/Main Controller | 68P81083C20-B |
| IGNITION_ CLEAR | | Audio PA & Voltage Regulators | 68P81083C20-B | IGNITION_ CLEAR | | Controller/Main Controller | 68P81083C20-B |
| B+_IGNITION | | Audio PA & Voltage Regulators/ Controller Interface | 68P81083C20-B | B+_IGNITION | | Controller, Emergency Ignition/ Controller Interface/Main Controller | 68P81083C20-B |
| 9.3 | | Audio PA & Voltage Regulators | 68P81083C20-B | | | See List of Common Voltages and Signals at End of This Table | |

Table 2: Schematic Diagram Interconnection List

| From | | | | To | | | |
|--------------------|----------|--|-----------------|--------------------|----------|--|-----------------|
| Signal Name | Node No. | Schematic Diagram Title | Publication No. | Signal Name | Node No. | Schematic Diagram Title | Publication No. |
| Vdd | | Audio PA & Voltage Regulators | 68P81083C20-B | | | See List of Common Voltages and Signals at End of This Table | |
| Vaud | | Audio PA & Voltage Regulators | 68P81083C20-B | Vaud | | Controller, ASFIC/Audio Block Diagram/Main Controller | 68P81083C20-B |
| PWR_RST | | Audio PA & Voltage Regulators | 68P81083C20-B | PWR_RST | | Controller, ASFIC/Audio Block Diagram/Main Controller | 68P81083C20-B |
| | | | | PWR_RST | | Controller/Main Controller | 68P81083C20-B |
| VFWD_BUF | | Audio PA & Voltage Regulators | 68P81083C20-B | VFWD_BUF | | Controller, Power Control/Main Controller | 68P81083C20-B |
| VSUM | | Audio PA & Voltage Regulators | 68P81083C20-B | VSUM | | Controller, Power Control/Main Controller | 68P81083C20-B |
| EXP_FILTERED_AUDIO | | Controller, ASFIC/Audio Block Diagram/Main Controller | 68P81083C20-B | EXP_FILTERED_AUDIO | | Controller, Hear Clear/Audio Block Diagram/Main Controller | 68P81083C20-B |
| AUX_RX_IN1 | | Controller, ASFIC/Audio Block Diagram/Main Controller/Controller Interface | 68P81083C20-B | AUX_RX_IN1 | J0401-9 | Controller Interface | 68P81083C20-B |
| AUX_RX_IN2 | | Controller, ASFIC/Audio Block Diagram/Main Controller/Controller Interface | 68P81083C20-B | AUX_RX_IN2 | J0403-12 | Controller Interface | 68P81083C20-B |
| AUX_RX_IN3 | | Controller, ASFIC/Audio Block Diagram/Main Controller/Controller Interface | 68P81083C20-B | AUX_RX_IN3 | J0408-9 | Controller Interface | 68P81083C20-B |
| AUX_TX_IN1 | | Controller, ASFIC/Audio Block Diagram/Main Controller/Controller Interface | 68P81083C20-B | AUX_TX_IN1 | J0401-14 | Controller Interface | 68P81083C20-B |
| AUX_TX_IN2 | | Controller, ASFIC/Audio Block Diagram/Main Controller/Controller Interface | 68P81083C20-B | AUX_TX_IN2 | J0403-24 | Controller Interface | 68P81083C20-B |

Table 2: Schematic Diagram Interconnection List

| From | | | | To | | | |
|------------------|----------|--|-----------------|------------------|----------|--|-----------------|
| Signal Name | Node No. | Schematic Diagram Title | Publication No. | Signal Name | Node No. | Schematic Diagram Title | Publication No. |
| AUX_TX_IN3 | | Controller, ASFIC/Audio Block Diagram/Main Controller/Controller Interface | 68P81083C20-B | AUX_TX_IN3 | J0408-14 | Controller Interface | 68P81083C20-B |
| 9.3V | | Controller, ASFIC/Audio Block Diagram/Main Controller | 68P81083C20-B | | | See List of Common Voltages and Signals at End of This Table | |
| VAG | | Controller, ASFIC/Audio Block Diagram/Main Controller | 68P81083C20-B | VAG | | Controller, IO RSSI Buffers Controller Interface/Main Controller | 68P81083C20-B |
| Vaud | | Controller, ASFIC/Audio Block Diagram/Main Controller | 68P81083C20-B | Vaud | | Audio PA & Voltage Regulators | 68P81083C20-B |
| CLK | | Controller, ASFIC/Audio Block Diagram/Main Controller | 68P81083C20-B | | | See List of Common Voltages and Signals at End of This Table | |
| PL_TX | | Controller, ASFIC/Audio Block Diagram/Main Controller | 68P81083C20-B | PL_TX | | Controller/Main Controller | 68P81083C20-B |
| 2.1MHZ | | Controller, ASFIC/Audio Block Diagram/Main Controller | 68P81083C20-B | | | See List of Common Voltages and Signals at End of This Table | |
| TX_DATA | | Controller, ASFIC/Audio Block Diagram/Main Controller | 68P81083C20-B | TX_DATA | | Controller/Main Controller | 68P81083C20-B |
| LG_DTMF | | Controller, ASFIC/Audio Block Diagram/Main Controller | 68P81083C20-B | LG_DTMF | | Controller/Main Controller | 68P81083C20-B |
| ASFIC_SEL | | Controller, ASFIC/Audio Block Diagram/Main Controller | 68P81083C20-B | ASFIC_SEL | | Controller/Main Controller | 68P81083C20-B |
| SPI_TX_DATA | | Controller, ASFIC/Audio Block Diagram/Main Controller | 68P81083C20-B | | | See List of Common Voltages and Signals at End of This Table | |
| EXP_AUDIO | | Controller, ASFIC/Audio Block Diagram/Main Controller | 68P81083C20-B | EXP_AUDIO | | Controller, Hear Clear/Audio Block Diagram/Main Controller | 68P81083C20-B |
| RX_IN | | Controller, ASFIC/Audio Block Diagram/Main Controller | 68P81083C20-B | RX_IN | | Controller, Hear Clear/Audio Block Diagram/Main Controller | 68P81083C20-B |
| TRL_HD2:KEY_FAIL | | Controller, ASFIC/Audio Block Diagram/Main Controller | 68P81083C20-B | TRL_HD2:KEY_FAIL | J0405-11 | Controller Interface | 68P81083C20-B |

Table 2: Schematic Diagram Interconnection List

| From | | | | To | | | |
|---------------------|----------|---|-----------------|---------------------|----------|---|-----------------|
| Signal Name | Node No. | Schematic Diagram Title | Publication No. | Signal Name | Node No. | Schematic Diagram Title | Publication No. |
| SQUELCH_IN | | Controller, ASFIC/Audio Block Diagram/Main Controller | 68P81083C20-B | SQUELCH | IF1-2-17 | Receiver IF | 68P81080C43-C |
| | | | | SQUELCH | IF3-2-16 | Receiver IF | 68P81080C43-C |
| MIC_VOLTAGE | | Controller, ASFIC/Audio Block Diagram/Main Controller | 68P81083C20-B | MIC_VOLTAGE | | Controller, Emergency Ignition/Controller Interface/Main Controller | 68P81083C20-B |
| MIC_IN | | Controller, ASFIC/Audio Block Diagram/Main Controller | 68P81083C20-B | MIC_IN | | Controller, Emergency Ignition/Controller Interface/Main Controller | 68P81083C20-B |
| DISC | | Controller, ASFIC/Audio Block Diagram/Main Controller | 68P81083C20-B | DISC | | Controller, Hear Clear/Audio Block Diagram/Main Controller | 68P81083C20-B |
| | | | | DISC | | Receiver IF | 68P81080C43-C |
| | | | | DISC | IF1-3-2 | Receiver IF | 68P81080C43-C |
| | | | | DISC | IF3-3-4 | Receiver Back End | 68P81080C43-C |
| EXT_MIC_IN | | Controller, ASFIC/Audio Block Diagram/Main Controller | 68P81083C20-B | EXT_MIC_IN | J0403-23 | Controller Interface | 68P81083C20-B |
| TX_IN | | Controller, ASFIC/Audio Block Diagram/Main Controller | 68P81083C20-B | TX_IN | | Controller, Hear Clear/Audio Block Diagram/Main Controller | 68P81083C20-B |
| RSSI | | Controller, ASFIC/Audio Block Diagram/Main Controller | 68P81083C20-B | | | See List of Common Voltages and Signals at End of This Table | |
| PWR_RST | | Controller, ASFIC/Audio Block Diagram/Main Controller | 68P81083C20-B | PWR_RST | | Audio PA & Voltage Regulators | 68P81083C20-B |
| | | | | PWR_RST | | Controller/Main Controller | 68P81083C20-B |
| RX_HI&FIL_AUDIO_OUT | | Controller, ASFIC/Audio Block Diagram/Main Controller | 68P81083C20-B | RX_HI&FIL_AUDIO_OUT | J0403-11 | Controller Interface | 68P81083C20-B |
| RX_HI | | Controller, ASFIC/Audio Block Diagram/Main Controller | 68P81083C20-B | RX_HI | J0405-8 | Controller Interface | 68P81083C20-B |
| 1200 | | Controller, ASFIC/Audio Block Diagram/Main Controller | 68P81083C20-B | 1200 | | Controller/Main Controller | 68P81083C20-B |

Table 2: Schematic Diagram Interconnection List

| From | | | | To | | | |
|-------------------|----------|---|-----------------|-------------------|------------------|--|-----------------|
| Signal Name | Node No. | Schematic Diagram Title | Publication No. | Signal Name | Node No. | Schematic Diagram Title | Publication No. |
| UP_CLK | | Controller, ASFIC/Audio Block Diagram/Main Controller | 68P81083C20-B | UP_CLK | | Controller/Main Controller | 68P81083C20-B |
| PL_RX | | Controller, ASFIC/Audio Block Diagram/Main Controller | 68P81083C20-B | PL_RX | | Controller/Main Controller | 68P81083C20-B |
| RX_DATA | | Controller, ASFIC/Audio Block Diagram/Main Controller | 68P81083C20-B | RX_DATA | | Controller/Main Controller | 68P81083C20-B |
| RX_AUDIO | | Controller, ASFIC/Audio Block Diagram/Main Controller | 68P81083C20-B | RX_AUDIO | | Audio PA & Voltage Regulators | 68P81083C20-B |
| FILTERED_AUDIO | | Controller, ASFIC/Audio Block Diagram/Main Controller | 68P81083C20-B | FILTERED_AUDIO | | Controller, Hear Clear/Audio Block Diagram/Main Controller | 68P81083C20-B |
| ASFIC_MIC_AUD_OUT | | Controller, ASFIC/Audio Block Diagram/Main Controller | 68P81083C20-B | ASFIC_MIC_AUD_OUT | | Controller, Hear Clear/Audio Block Diagram/Main Controller | 68P81083C20-B |
| VOX | | Controller, ASFIC/Audio Block Diagram/Main Controller | 68P81083C20-B | VOX | | Controller/Main Controller | 68P81083C20-B |
| ASFIC_PRE-EMP_OUT | | Controller, ASFIC/Audio Block Diagram/Main Controller | 68P81083C20-B | ASFIC_PRE-EMP_OUT | J0401-7, J0408-7 | | 68P81083C20-B |
| AUDIO_MOD | | Controller, ASFIC/Audio Block Diagram/Main Controller | 68P81083C20-B | AUDIO_MOD | IF1-2-12 | Receiver IF | 68P81080C43-C |
| | | | | AUDIO_MOD | IF4-1-6 | Receiver IF | 68P81080C43-C |
| | | | | AUDIO_MOD | | Synthesizer | 68P81080C43-C |
| FF_EN | | Controller, ASFIC/Audio Block Diagram/Main Controller | 68P81083C20-B | FF_EN | | Controller, Hear Clear/audio Block Diagram/Main Controller | 68P81083C20-B |
| HCI_DIS | | Controller, ASFIC/Audio Block Diagram/Main Controller | 68P81083C20-B | HCI_DIS | | Controller, Hear Clear/audio Block Diagram/Main Controller | 68P81083C20-B |
| LC_DIS | | Controller, ASFIC/Audio Block Diagram/Main Controller | 68P81083C20-B | LC_DIS | | Controller, Hear Clear/audio Block Diagram/Main Controller | 68P81083C20-B |
| COMP_EN | | Controller, ASFIC/Audio Block Diagram/Main Controller | 68P81083C20-B | COMP_EN | | Controller, Hear Clear/audio Block Diagram/Main Controller | 68P81083C20-B |

Table 2: Schematic Diagram Interconnection List

| From | | | | To | | | |
|-------------|----------|--|-----------------|-------------|-----------------------|--|-----------------|
| Signal Name | Node No. | Schematic Diagram Title | Publication No. | Signal Name | Node No. | Schematic Diagram Title | Publication No. |
| HI_CLMP_EN | | Controller, ASFIC/Audio Block Diagram/Main Controller | 68P81083C20-B | HI_CLMP_EN | | Controller, Hear Clear/audio Block Diagram/Main Controller | 68P81083C20-B |
| CH_ACT | | Controller, ASFIC/Audio Block Diagram/Main Controller | 68P81083C20-B | CH_ACT | | Controller/Main Controller | 68P81083C20-B |
| SQ_DET | | Controller, ASFIC/Audio Block Diagram/Main Controller | 68P81083C20-B | SQ_DET | | Controller/Main Controller | 68P81083C20-B |
| UNIV_IO | | Controller, ASFIC/Audio Block Diagram/Main Controller | 68P81083C20-B | UNIV_IO | J0401-10, J0408-10 | Controller Interface | 68P81083C20-B |
| | | | | UNIV_IO | | Controller, IO RSSI Buffers/Controller Interface/Main Controller | 68P81083C20-B |
| COMP_EN | | Controller, Hear Clear/Audio Block Diagram/Main Controller | 68P81083C20-B | COMP_EN | | Controller, ASFIC/Audio Block Diagram/Main Controller | 68P81083C20-B |
| FF_EN | | Controller, Hear Clear/audio Block Diagram/Main Controller | 68P81083C20-B | FF_EN | | Controller, ASFIC/Audio Block Diagram/Main Controller | 68P81083C20-B |
| HI_CLMP_EN | | Controller, Hear Clear/Audio Block Diagram/Main Controller | 68P81083C20-B | HI_CLMP_EN | | Controller, ASFIC/Audio Block Diagram/Main Controller | 68P81083C20-B |
| RSSI | | Controller, Hear Clear/Audio Block Diagram/Main Controller | 68P81083C20-B | | | See List of Common Voltages and Signals at End of This Table | |
| DISC | | Controller, Hear Clear/Audio Block Diagram/Main Controller | 68P81083C20-B | DISC | IF1-3-2 | Receiver IF | 68P81080C43-C |
| | | | | DISC | IF3-3-4 | Receiver IF | 68P81080C43-C |
| | | | | DISC | | Receiver Back End | 68P81080C43-C |
| | | | | DISC | | Controller, ASFIC/Audio Block Diagram/Main Controller | 68P81083C20-B |
| HCI_DIS | | Controller, Hear Clear/Audio Block Diagram/Main Controller | 68P81083C20-B | HCI_DIS | | Controller, ASFIC/Audio Block Diagram/Main Controller | 68P81083C20-B |
| LC_DIS | | Controller, Hear Clear/Audio Block Diagram/Main Controller | 68P81083C20-B | LC_DIS | | Controller, ASFIC/Audio Block Diagram/Main Controller | 68P81083C20-B |

Table 2: Schematic Diagram Interconnection List

| From | | | | To | | | |
|--------------------|----------|--|-----------------|------------------------|--------------------|--|-----------------|
| Signal Name | Node No. | Schematic Diagram Title | Publication No. | Signal Name | Node No. | Schematic Diagram Title | Publication No. |
| FILTERED_AUDIO | | Controller, Hear Clear/Audio Block Diagram/Main Controller | 68P81083C20-B | FILTERED_AUDIO | | Controller, ASFIC/Audio Block Diagram/Main Controller | 68P81083C20-B |
| ASFIC_MIC_AUD_OUT | | Controller, Hear Clear/Audio Block Diagram/Main Controller | 68P81083C20-B | ASFIC_MIC_AUD_OUT | | Controller, ASFIC/Audio Block Diagram/Main Controller | 68P81083C20-B |
| 9.3V | | Controller, Hear Clear/Audio Block Diagram/Main Controller | 68P81083C20-B | | | See List of Common Voltages and Signals at End of This Table | |
| EXP_FILTERED_AUDIO | | Controller, Hear Clear/Audio Block Diagram/Main Controller | 68P81083C20-B | EXP_FILTERED_AUDIO | | Controller, ASFIC/Audio Block Diagram/Main Controller | 68P81083C20-B |
| EXP_AUDIO | | Controller, Hear Clear/Audio Block Diagram/Main Controller | 68P81083C20-B | EXP_AUDIO | | Controller, ASFIC/Audio Block Diagram/Main Controller | 68P81083C20-B |
| RX_IN | | Controller, Hear Clear/Audio Block Diagram/Main Controller | 68P81083C20-B | RX_IN | | Controller, ASFIC/Audio Block Diagram/Main Controller | 68P81083C20-B |
| TX_IN | | Controller, Hear Clear/Audio Block Diagram/Main Controller | 68P81083C20-B | TX_IN | | Controller, ASFIC/Audio Block Diagram/Main Controller | 68P81083C20-B |
| UNIV_IO | | Controller, IO RSSI Buffers/Controller Interface/Main Controller | 68P81083C20-B | UNIV_IO | J0401-10, J0408-10 | Controller Interface | 68P81083C20-B |
| | | | | UNIV_IO | | Controller, ASFIC/Audio Block Diagram/Main Controller | 68P81083C20-B |
| RSSI | | Controller, IO RSSI Buffers/Controller Interface/Main Controller | 68P81083C20-B | | | See List of Common Voltages and Signals at End of This Table | |
| UNIV_IO_OUT | | Controller, IO RSSI Buffers/Controller Interface/Main Controller | 68P81083C20-B | BUFFERED DISCRIMINATOR | J0403-25 | | 68P81083C20-B |
| RSSI_OUT | | Controller, IO RSSI Buffers/Controller Interface/Main Controller | 68P81083C20-B | RSSI_OUT | | Controller/Main Controller | 68P81083C20-B |
| | | | | RSSI_OUT | J0403-22 | Controller Interface | 68P81083C20-B |

Table 2: Schematic Diagram Interconnection List

| From | | | | To | | | |
|-------------|----------|---|-----------------|-------------|----------|---|-----------------|
| Signal Name | Node No. | Schematic Diagram Title | Publication No. | Signal Name | Node No. | Schematic Diagram Title | Publication No. |
| 9.3V | | Controller, IO RSSI Buffers/ Controller Interface/Main Controller | 68P81083C20-B | | | See List of Common Voltages and Signals at End of This Table | |
| Vdd | | Controller, IO RSSI Buffers/ Controller Interface/Main Controller | 68P81083C20-B | | | See List of Common Voltages and Signals at End of This Table | |
| VAG | | Controller, IO RSSI Buffers/ Controller Interface/Main Controller | 68P81083C20-B | VAG | | Controller, ASFIC/Audio Block Diagram/Main Controller | 68P81083C20-B |
| MIC_VOLTAGE | | Controller, Emergency Ignition/ Controller Interface/Main Controller | 68P81083C20-B | MIC_VOLTAGE | | Controller, ASFIC/Audio Block Diagram/Main Controller | 68P81083C20-B |
| MIC_IN | | Controller, Emergency Ignition/ Controller Interface/Main Controller | 68P81083C20-B | MIC_IN | | Controller, ASFIC/Audio Block Diagram/Main Controller | 68P81083C20-B |
| EMERGENCY | | Controller, Emergency Ignition/ Controller Interface/Main Controller | 68P81083C20-B | EMERGENCY | J0403-9 | Controller Interface | 68P81083C20-B |
| B+_CTRL | | Controller, Emergency Ignition/ Controller Interface/Main Controller | 68P81083C20-B | B+_CTRL | | Controller/Main Controller | 68P81083C20-B |
| IGNITION | | Controller, Emergency Ignition/ Controller Interface/Main Controller | 68P81083C20-B | IGNITION | J0403-15 | Controller Interface | 68P81083C20-B |
| SW_B+_SENSE | | Controller, Emergency Ignition/ Controller Interface/Main Controller | 68P81083C20-B | SW_B+_SENSE | | Controller/Main Controller | 68P81083C20-B |
| B+_ON_OFF | | Controller, Emergency Ignition/ Controller Interface/Main Controller | 68P81083C20-B | B+_ON_OFF | | Audio PA & Voltage Regulators/ Controller Interface | 68P81083C20-B |

Table 2: Schematic Diagram Interconnection List

| From | | | | To | | | |
|----------------|----------|---|-----------------|----------------|----------------------|---|-----------------|
| Signal Name | Node No. | Schematic Diagram Title | Publication No. | Signal Name | Node No. | Schematic Diagram Title | Publication No. |
| EMER_OUT | | Controller, Emergency Ignition/ Controller Interface/Main Controller | 68P81083C20-B | EMER_IN | | Controller/Main Controller | 68P81083C20-B |
| A+_SENSE | | Controller, Emergency Ignition/ Controller Interface/Main Controller | 68P81083C20-B | A+_SENSE | | Controller/Main Controller | 68P81083C20-B |
| IGNITION_SENSE | | Controller, Emergency Ignition/ Controller Interface/Main Controller | 68P81083C20-B | IGNITION_SENSE | | Controller/Main Controller | 68P81083C20-B |
| B+_IGNITION | | Controller, Emergency Ignition/ Controller Interface/Main Controller | 68P81083C20-B | B+_IGNITION | | Audio PA & Voltage Regulators/ Controller Interface | 68P81083C20-B |
| +5V | | Controller, Emergency Ignition/ Controller Interface/Main Controller | 68P81083C20-B | | | See List of Common Voltages and Signals at End of This Table | |
| SW_B+ | | Controller, Emergency Ignition/ Controller Interface/Main Controller | 68P81083C20-B | | | See List of Common Voltages and Signals at End of This Table | |
| UNSW_+5V | | Controller, Emergency Ignition/ Controller Interface/Main Controller | 68P81083C20-B | UNSW_5V | | Audio PA & Voltage Regulators | 68P81083C20-B |
| Vdd | | Controller, Emergency Ignition/ Controller Interface/Main Controller | 68P81083C20-B | | | See List of Common Voltages and Signals at End of This Table | |
| BUS- | | Controller, SCI Drivers/Controller Interface/Main Controller | 68P81083C20-B | BUS- | J0405-4, J0403-18 | Controller Interface | 68P81083C20-B |
| BUS+ | | Controller, SCI Drivers/Controller Interface/Main Controller | 68P81083C20-B | BUS+ | J0405-15, J0403-6 | Controller Interface | 68P81083C20-B |
| SCI_TX | | Controller, SCI Drivers/Controller Interface/Main Controller | 68P81083C20-B | SCI_TX | | Controller/Main Controller | 68P81083C20-B |

Table 2: Schematic Diagram Interconnection List

| From | | | | To | | | |
|--|----------|--|-----------------|-------------|--|--|-----------------|
| Signal Name | Node No. | Schematic Diagram Title | Publication No. | Signal Name | Node No. | Schematic Diagram Title | Publication No. |
| BUSY_OUT | | Controller, SCI Drivers/Controller Interface/Main Controller | 68P81083C20-B | BUSY_OUT | | Controller/Main Controller | 68P81083C20-B |
| BUSY | | Controller, SCI Drivers/Controller Interface/Main Controller | 68P81083C20-B | BUSY | J0405-14, J0403-5 | Controller Interface | 68P81083C20-B |
| RESET_OUT | | Controller, SCI Drivers/Controller Interface/Main Controller | 68P81083C20-B | RESET_OUT | | Controller/Main Controller | 68P81083C20-B |
| LH_RESET | | Controller, SCI Drivers/Controller Interface/Main Controller | 68P81083C20-B | RESET | J0403-17 | Controller Interface | 68P81083C20-B |
| | | | | RESET | J0405-3 (Via Shorting Resistor R0125) | Controller Interface | 68P81083C20-B |
| SCI_RX | | Controller, SCI Drivers/Controller Interface/Main Controller | 68P81083C20-B | SCI_RX | | Controller/Main Controller | 68P81083C20-B |
| SCI_ECHO | | Controller, SCI Drivers/Controller Interface/Main Controller | 68P81083C20-B | SCI_ECHO | | Controller | 68P81083C20-B |
| BUS_SCI | | Controller, SCI Drivers/Controller Interface/Main Controller | 68P81083C20-B | | | | |
| BUSY_IN | | Controller, SCI Drivers/Controller Interface/Main Controller | 68P81083C20-B | BUSY_IN | | Controller/Main Controller | 68P81083C20-B |
| RESET_IN | | Controller, SCI Drivers/Controller Interface/Main Controller | 68P81083C20-B | RESET_IN | | Controller/Main Controller | 68P81083C20-B |
| CLOSED_RESET (On Closed Architecture Only) | | Controller, SCI Drivers/Controller Interface/Main Controller | 68P81083C20-B | | | | |
| +5V | | Controller, SCI Drivers/Controller Interface/Main Controller | 68P81083C20-B | | | See List of Common Voltages and Signals at End of This Table | |

Table 2: Schematic Diagram Interconnection List

| From | | | | To | | | |
|-------------|----------|--|-----------------|-------------|----------|--|-----------------|
| Signal Name | Node No. | Schematic Diagram Title | Publication No. | Signal Name | Node No. | Schematic Diagram Title | Publication No. |
| Vdd | | Controller, SCI Drivers/Controller Interface/Main Controller | 68P81083C20-B | | | See List of Common Voltages and Signals at End of This Table | |
| IO2 | | Controller, IO Buffers/Controller Interface/Main Controller | 68P81083C20-B | IO2 | J0403-16 | Controller Interface | 68P81083C20-B |
| OUT2 | | Controller, IO Buffers/Controller Interface/Main Controller | 68P81083C20-B | OUT_2 | | Controller/Main Controller | 68P81083C20-B |
| IO3 | | Controller, IO Buffers/Controller Interface/Main Controller | 68P81083C20-B | IO3 | J0403-21 | Controller Interface | 68P81083C20-B |
| | | | | VPP_PROGRAM | | Controller/Main Controller | 68P81083C20-B |
| OUT3 | | Controller, IO Buffers/Controller Interface/Main Controller | 68P81083C20-B | OUT_3 | | Controller/Main Controller | 68P81083C20-B |
| IO4 | | Controller, IO Buffers/Controller Interface/Main Controller | 68P81083C20-B | IO4 | J0403-20 | Controller Interface | 68P81083C20-B |
| OUT4 | | Controller, IO Buffers/Controller Interface/Main Controller | 68P81083C20-B | OUT_4 | | Controller/Main Controller | 68P81083C20-B |
| IO5 | | Controller, IO Buffers/Controller Interface/Main Controller | 68P81083C20-B | IO5 | J0403-8 | Controller Interface | 68P81083C20-B |
| OUT5 | | Controller, IO Buffers/Controller Interface/Main Controller | 68P81083C20-B | OUT_5 | | Controller/Main Controller | 68P81083C20-B |
| IO6 | | Controller, IO Buffers/Controller Interface/Main Controller | 68P81083C20-B | IO6 | J0403-7 | Controller Interface | 68P81083C20-B |
| OUT6 | | Controller, IO Buffers/Controller Interface/Main Controller | 68P81083C20-B | OUT_6 | | Controller/Main Controller | 68P81083C20-B |
| IN2 | | Controller, IO Buffers/Controller Interface/Main Controller | 68P81083C20-B | IN_2 | | Controller/Main Controller | 68P81083C20-B |
| IN3 | | Controller, IO Buffers/Controller Interface/Main Controller | 68P81083C20-B | IN_3 | | Controller/Main Controller | 68P81083C20-B |

Table 2: Schematic Diagram Interconnection List

| From | | | | To | | | |
|-------------|----------|---|-----------------|--------------------|-----------------------|--|-----------------|
| Signal Name | Node No. | Schematic Diagram Title | Publication No. | Signal Name | Node No. | Schematic Diagram Title | Publication No. |
| IN4 | | Controller, IO Buffers/Controller Interface/Main Controller | 68P81083C20-B | IN_4 | | Controller/Main Controller | 68P81083C20-B |
| IN5 | | Controller, IO Buffers/Controller Interface/Main Controller | 68P81083C20-B | IN_5 | | Controller/Main Controller | 68P81083C20-B |
| IN6_:RTSBIN | | Controller, IO Buffers/Controller Interface/Main Controller | 68P81083C20-B | IN_6 | | Controller/Main Controller | 68P81083C20-B |
| Vdd | | Controller, IO Buffers/Controller Interface/Main Controller | 68P81083C20-B | | | See List of Common Voltages and Signals at End of This Table | |
| SW_B+ | | Controller, IO Buffers/Controller Interface/Main Controller | 68P81083C20-B | | | See List of Common Voltages and Signals at End of This Table | |
| +5V | | Controller, IO Buffers/Controller Interface/Main Controller | 68P81083C20-B | | | See List of Common Voltages and Signals at End of This Table | |
| RX_DATA_IN | | Controller/Main Controller | 68P81083C20-B | SW_5V:RX_DATA_IN | | Controller Interface | 68P81083C20-B |
| RTSB_OUT | | Controller/Main Controller | 68P81083C20-B | BUF_CH_EN:RTSB_OUT | | Controller Interface | 68P81083C20-B |
| RESET* | | Controller/Main Controller | 68P81083C20-B | RESET* | J0401-12, J0408-12 | Controller Interface | 68P81083C20-B |
| PWR_RST | | Controller/Main Controller | 68P81083C20-B | PWR_RST | | Audio PA & Voltage Regulators | 68P81083C20-B |
| | | | | PWR_RST | | Controller, ASFIC/Audio Block Diagram/Main Controller | 68P81083C20-B |
| RESET_OUT | | Controller/Main Controller | 68P81083C20-B | RESET_OUT | | Controller, SCI Drivers/Controller Interface/Main Controller | 68P81083C20-B |
| RESET_IN | | Controller/Main Controller | 68P81083C20-B | RESET_IN | | Controller, SCI Drivers/Controller Interface/Main Controller | 68P81083C20-B |
| RX_DATA | | Controller/Main Controller | 68P81083C20-B | RX_DATA | | Controller, ASFIC/Audio Block Diagram/Main Controller | 68P81083C20-B |
| ASN_SEL | | Controller/Main Controller | 68P81083C20-B | | | | |

Table 2: Schematic Diagram Interconnection List

| From | | | | To | | | |
|-----------------------------|----------|----------------------------|-----------------|------------------------------------|-----------------------|---|-----------------|
| Signal Name | Node No. | Schematic Diagram Title | Publication No. | Signal Name | Node No. | Schematic Diagram Title | Publication No. |
| K9.1_ENB | | Controller/Main Controller | 68P81083C20-B | K9.1_ENB | | Controller, Power Control/Main Controller | 68P81083C20-B |
| OUT_3 | | Controller/Main Controller | 68P81083C20-B | OUT3 | | Controller, IO Buffers/Controller Interface/Main Controller | 68P81083C20-B |
| OUT_2 | | Controller/Main Controller | 68P81083C20-B | OUT2 | | Controller, IO Buffers/Controller Interface/Main Controller | 68P81083C20-B |
| AUPA_EN | | Controller/Main Controller | 68P81083C20-B | AUPA_EN | | Audio PA & Voltage Regulators | 68P81083C20-B |
| JABBA_SEL | | Controller/Main Controller | 68P81083C20-B | O:JABBA_SEL_ C:DTMF_SEL | J0401-21, J0408-21 | Controller Interface | 68P81083C20-B |
| PWR_RANGE | | Controller/Main Controller | 68P81083C20-B | PWR_RANGE | | Controller, Power Control/Main Controller | 68P81083C20-B |
| DA_SEL | | Controller/Main Controller | 68P81083C20-B | DA_SEL | | Controller, Power Control/Main Controller | 68P81083C20-B |
| PL_RX | | Controller/Main Controller | 68P81083C20-B | PL_RX | | Controller, ASFIC/Audio Block Diagram/Main Controller | 68P81083C20-B |
| DUPLEX_SYN_ SEL | | Controller/Main Controller | 68P81083C20-B | DUPLEX_SYN_ SELECT | IF1-2-19 | Receiver IF | 68P81080C43-C |
| BUF_SPI_DATA :SECURE_SEL | | Controller/Main Controller | 68P81083C20-B | BUF_SPI_DATA :SECURE_SEL ECT | | Controller Interface | 68P81083C20-B |
| IGNITION_ CLEAR | | Controller/Main Controller | 68P81083C20-B | IGNITION_ CLEAR | | Audio PA & Voltage Regulators | 68P81083C20-B |
| ZIF_SEL | | Controller/Main Controller | 68P81083C20-B | ZIF_SEL | IF1-2-18 | Receiver IF | 68P81080C43-C |
| | | | | ZIF_SEL | IF3-2-1 | Receiver IF | 68P81080C43-C |
| | | | | ZIF_SEL | | Receiver BACK-END | 68P81080C43-C |
| OUT_6 | | Controller/Main Controller | 68P81083C20-B | OUT6 | | Controller, IO Buffers/Controller Interface/Main Controller | 68P81083C20-B |

Table 2: Schematic Diagram Interconnection List

| From | | | | To | | | |
|---|----------|----------------------------|-----------------|----------------|-----------------------|---|-----------------|
| Signal Name | Node No. | Schematic Diagram Title | Publication No. | Signal Name | Node No. | Schematic Diagram Title | Publication No. |
| BUSY_OUT | | Controller/Main Controller | 68P81083C20-B | BUSY_OUT | | Controller, SCI Drivers/Controller Interface/Main Controller | 68P81083C20-B |
| B+_CTRL | | Controller/Main Controller | 68P81083C20-B | B+_CTRL | | Controller, Emergency Ignition/Controller Interface/Main Controller | 68P81083C20-B |
| LOCK_DET | | Controller/Main Controller | 68P81083C20-B | LOCK_DET | IF1-3-11 | Receiver IF | 68P81080C43-C |
| | | | | LOCK_DET | IF4-4-3 | Receiver IF | 68P81080C43-C |
| | | | | LOCK_DET | | Synthesizer | 68P81080C43-C |
| IN_3 | | Controller/Main Controller | 68P81083C20-B | IN3 | | Controller, IO Buffers/Controller Interface/Main Controller | 68P81083C20-B |
| IN_4 | | Controller/Main Controller | 68P81083C20-B | IN4 | | Controller, IO Buffers/Controller Interface/Main Controller | 68P81083C20-B |
| ASN_INT | | Controller/Main Controller | 68P81083C20-B | ASN_INT_OPT_TX | J0401-22, J0408-22 | Controller Interface | 68P81083C20-B |
| OUT_5 | | Controller/Main Controller | 68P81083C20-B | OUT5 | | Controller, IO Buffers/Controller Interface/Main Controller | 68P81083C20-B |
| OUT_4 | | Controller/Main Controller | 68P81083C20-B | OUT4 | | Controller, IO Buffers/Controller Interface/Main Controller | 68P81083C20-B |
| EMER_IN | | Controller/Main Controller | 68P81083C20-B | EMER_OUT | | Controller, Emergency Ignition/Controller Interface/Main Controller | 68P81083C20-B |
| SW_B+_SENSE | | Controller/Main Controller | 68P81083C20-B | SW_B+_SENSE | | Controller, Emergency Ignition/Controller Interface/Main Controller | 68P81083C20-B |
| DUPLEX_LOCK_DET (Not Connected For Half Duplex) | | Controller/Main Controller | 68P81083C20-B | | | | |
| IGNITION_SENSE | | Controller/Main Controller | 68P81083C20-B | IGNITION_SENSE | | Controller, Emergency Ignition/Controller Interface/Main Controller | 68P81083C20-B |
| IN_6 | | Controller/Main Controller | 68P81083C20-B | IN6_:_RTSBIN | | Controller, IO Buffers/Controller Interface/Main Controller | 68P81083C20-B |

Table 2: Schematic Diagram Interconnection List

| From | | | | To | | | |
|-------------|----------|----------------------------|-----------------|----------------------------|-----------------------|---|-----------------|
| Signal Name | Node No. | Schematic Diagram Title | Publication No. | Signal Name | Node No. | Schematic Diagram Title | Publication No. |
| JABBA_INT | | Controller/Main Controller | 68P81083C20-B | O:JABBA_INT_ C:DTMF_SEL | J0401-20, J0408-20 | Controller Interface | 68P81083C20-B |
| SQ_DET | | Controller/Main Controller | 68P81083C20-B | SQ_DET | | Controller, ASFIC/Audio Block Diagram/Main Controller | 68P81083C20-B |
| IN_5 | | Controller/Main Controller | 68P81083C20-B | IN5 | | Controller, IO Buffers/Controller Interface/Main Controller | 68P81083C20-B |
| CH_ACT | | Controller/Main Controller | 68P81083C20-B | CH_ACT | | Controller, ASFIC/Audio Block Diagram/Main Controller | 68P81083C20-B |
| IN_2 | | Controller/Main Controller | 68P81083C20-B | IN2 | | Controller, IO Buffers/Controller Interface/Main Controller | 68P81083C20-B |
| PL_TX | | Controller/Main Controller | 68P81083C20-B | PL_TX | | Controller, ASFIC/Audio Block Diagram/Main Controller | 68P81083C20-B |
| TX_DATA | | Controller/Main Controller | 68P81083C20-B | TX_DATA | | Controller, ASFIC/Audio Block Diagram/Main Controller | 68P81083C20-B |
| LG_DTMF | | Controller/Main Controller | 68P81083C20-B | LG_DTMF | | Controller, ASFIC/Audio Block Diagram/Main Controller | 68P81083C20-B |
| 1200 | | Controller/Main Controller | 68P81083C20-B | 1200 | | Controller, ASFIC/Audio Block Diagram/Main Controller | 68P81083C20-B |
| BUSY_IN | | Controller/Main Controller | 68P81083C20-B | BUSY_IN | | Controller, SCI Drivers/Controller Interface/Main Controller | 68P81083C20-B |
| A+_SENSE | | Controller/Main Controller | 68P81083C20-B | A+_SENSE | | Controller, Emergency Ignition/ Controller Interface/Main Controller | 68P81083C20-B |
| UP_CLK | | Controller/Main Controller | 68P81083C20-B | UP_CLK | | Controller, ASFIC/Audio Block Dia- gram/Main Controller | 68P81083C20-B |
| MOD_A_B | | Controller/Main Controller | 68P81083C20-B | MOD_A_B | | Controller Interface | 68P81083C20-B |
| SCI_RX | | Controller/Main Controller | 68P81083C20-B | SCI_RX | | Controller, SCI Drivers/Controller Interface/Main Controller | 68P81083C20-B |
| SCI_TX | | Controller/Main Controller | 68P81083C20-B | SCI_TX | | Controller, SCI Drivers/Controller Interface/Main Controller | 68P81083C20-B |

Table 2: Schematic Diagram Interconnection List

| From | | | | To | | | |
|-------------|----------|----------------------------|-----------------|-------------|-----------------------|--|-----------------|
| Signal Name | Node No. | Schematic Diagram Title | Publication No. | Signal Name | Node No. | Schematic Diagram Title | Publication No. |
| SPI_RX_DATA | | Controller/Main Controller | 68P81083C20-B | SPI_RX_DATA | J0401-19, J0408-19 | Controller Interface | 68P81083C20-B |
| SPI_TX_DATA | | Controller/Main Controller | 68P81083C20-B | | | See List of Common Voltages and Signals at End of This Table | |
| CLK | | Controller/Main Controller | 68P81083C20-B | | | See List of Common Voltages and Signals at End of This Table | |
| PA_DIS | | Controller/Main Controller | 68P81083C20-B | PA_DIS | | Controller, Power Control/Main Controller | 68P81083C20-B |
| RSSI | | Controller/Main Controller | 68P81083C20-B | | | See List of Common Voltages and Signals at End of This Table | |
| RSSI_OUT | | Controller/Main Controller | 68P81083C20-B | RSSI_OUT | | Controller, IO RSSI Buffers/ Controller Interface/Main Controller | 68P81083C20-B |
| | | | | RSSI_OUT | J0403-22 | Controller Interface | 68P81083C20-B |
| LBAT | | Controller/Main Controller | 68P81083C20-B | LBAT | | Controller Interface | 68P81083C20-B |
| TEMP | | Controller/Main Controller | 68P81083C20-B | TEMP | | Controller, Power Control/Main Controller | 68P81083C20-B |
| VOX | | Controller/Main Controller | 68P81083C20-B | VOX | | Controller, ASFIC/Audio Block Diagram/Main Controller | 68P81083C20-B |
| SYN_SEL | | Controller/Main Controller | 68P81083C20-B | SYN_SEL | IF1-3-10 | Receiver IF | 68P81080C43-C |
| | | | | SYN_SEL | IF4-3-4 | Receiver IF | 68P81080C43-C |
| | | | | SYNT_SEL | | Synthesizer | 68P81080C43-C |
| ROSC_SEL | | Controller/Main Controller | 68P81083C20-B | ROSC_SEL | IF1-2-13 | Receiver IF | 68P81080C43-C |
| | | | | ROSC_SEL | IF4-4-5 | Receiver IF | 68P81080C43-C |
| | | | | ROSC_SEL | | Synthesizer | 68P81080C43-C |
| ASFIC_SEL | | Controller/Main Controller | 68P81083C20-B | ASFIC_SEL | | Controller, ASFIC/Audio Block Diagram/Main Controller | 68P81083C20-B |

Table 2: Schematic Diagram Interconnection List

| From | | | | To | | | |
|------------------------------------|--------------------|-------------------------------|-----------------|-------------------------|----------|--|-----------------|
| Signal Name | Node No. | Schematic Diagram Title | Publication No. | Signal Name | Node No. | Schematic Diagram Title | Publication No. |
| VPP_PROGRAM | | Controller/Main Controller | 68P81083C20-B | IO3 | | Controller, IO Buffers/Controller Interface/Main Controller | 68P81083C20-B |
| | | | | IO3 | J0403-21 | Controller Interface | 68P81083C20-B |
| Vdd | | Controller/Main Controller | 68P81083C20-B | | | See List of Common Voltages and Signals at End of This Table | |
| SW_5V:RX_DATA_IN | | Controller Interface | 68P81083C20-B | RX_DATA_IN | | Controller/Main Controller | 68P81083C20-B |
| BUF_CH_EN:RTSB_OUT | | Controller Interface | 68P81083C20-B | RTSB_OUT | | Controller/Main Controller | 68P81083C20-B |
| O:JABBA_SEL_C:DTMF_SEL | J0401-21, J0408-21 | Controller Interface | 68P81083C20-B | JABBA_SEL | | Controller/Main Controller | 68P81083C20-B |
| BUF_SPI_DATA:SECURE_SELECT | | Controller Interface | 68P81083C20-B | BUF_SPI_DATA:SECURE_SEL | | Controller/Main Controller | 68P81083C20-B |
| O:JABBA_INT_C:DTMF_SEL | J0401-20, J0408-20 | Controller Interface | 68P81083C20-B | JABBA_INT | | Controller/Main Controller | 68P81083C20-B |
| MOD_A_B | | Controller Interface | 68P81083C20-B | MOD_A_B | | Controller/Main Controller | 68P81083C20-B |
| SPI_RX_DATA | J0401-19, J0408-19 | Controller Interface | 68P81083C20-B | SPI_RX_DATA | | Controller/Main Controller | 68P81083C20-B |
| RSSI_OUT | J0403-22 | Controller Interface | 68P81083C20-B | RSSI_OUT | | Controller, IO RSSI Buffers/Controller Interface/Main Controller | 68P81083C20-B |
| | | | | RSSI_OUT | | Controller/Main Controller | 68P81083C20-B |
| LBAT | | Controller Interface | 68P81083C20-B | LBAT | | Controller/Main Controller | 68P81083C20-B |
| | | | | | | | |
| Common Voltages and Signals | | | | | | | |
| A+ | | Power Amplifier | 68P81080C43-C | | | | |
| | | Audio PA & Voltage Regulators | 68P81083C20-B | | | | |

Table 2: Schematic Diagram Interconnection List

| From | | | | To | | | |
|-------------|----------|--------------------------------|-----------------|-------------|----------|-------------------------|-----------------|
| Signal Name | Node No. | Schematic Diagram Title | Publication No. | Signal Name | Node No. | Schematic Diagram Title | Publication No. |
| SW_B+ | | Controller, Power Control | 68P81083C20-B | | | | |
| | | Audio PA & Voltage Regulators | 68P81083C20-B | | | | |
| | | Controller, Emergency Ignition | 68P81083C20-B | | | | |
| | | Controller, IO Buffers | 68P81083C20-B | | | | |
| +5V | | Controller, Power Control | 68P81083C20-B | | | | |
| | | Audio PA & Voltage Regulators | 68P81083C20-B | | | | |
| | | Controller, Emergency Ignition | 68P81083C20-B | | | | |
| | | Controller, SCI Drivers | 68P81083C20-B | | | | |
| 9.3V | | Controller, IO Buffers | 68P81083C20-B | | | | |
| | | Receiver Front End | 68P81080C43-C | | | | |
| | | Receiver IF | 68P81080C43-C | | | | |
| | | Controller, Power Control | 68P81083C20-B | | | | |
| Vdd | | Audio PA & Voltage Regulators | 68P81083C20-B | | | | |
| | | Controller, ASFIC | 68P81083C20-B | | | | |
| | | Controller, HEAR CLEAR | 68P81083C20-B | | | | |
| | | Controller, IO RSSI Buffers | 68P81083C20-B | | | | |
| | | Synthesizer | 68P81080C43-C | | | | |
| | | Audio PA & Voltage Regulators | 68P81083C20-B | | | | |
| | | Controller, IO RSSI Buffers | 68P81083C20-B | | | | |
| | | Controller, Emergency Ignition | 68P81083C20-B | | | | |
| | | Controller, SCI Drivers | 68P81083C20-B | | | | |
| | | Controller, IO Buffers | 68P81083C20-B | | | | |

Table 2: Schematic Diagram Interconnection List

| From | | | | To | | | |
|-------------|----------|---|-----------------|-------------|----------|-------------------------|-----------------|
| Signal Name | Node No. | Schematic Diagram Title | Publication No. | Signal Name | Node No. | Schematic Diagram Title | Publication No. |
| | | Controller | 68P81083C20-B | | | | |
| RF_REG_5V | | Receiver Front End | 68P81080C43-C | | | | |
| | IF4-4-8 | Receiver IF | 68P81080C43-C | | | | |
| | | Receiver Back End | 68P81080C43-C | | | | |
| | | Synthesizer | 68P81080C43-C | | | | |
| K9.1 | | Receiver Front End | 68P81080C43-C | | | | |
| | | Power Amplifier | 68P81080C43-C | | | | |
| | | Synthesizer | 68P81080C43-C | | | | |
| | | Controller, Power Control/Main Controller | 68P81083C20-B | | | | |
| CLK | IF1-3-5 | Receiver IF | 68P81080C43-C | | | | |
| | | Receiver Back End | 68P81080C43-C | | | | |
| | | Synthesizer | 68P81080C43-C | | | | |
| | | Controller, Power Control/Main Controller | 68P81083C20-B | | | | |
| | | Controller, ASFIC/Audio Block Diagram/Main Controller | 68P81083C20-B | | | | |
| | | Controller/Main Controller | 68P81083C20-B | | | | |
| 2.1MHZ | IF1-3-8 | Receiver IF | 68P81080C43-C | | | | |
| | | Receiver Back End | 68P81080C43-C | | | | |
| | | Synthesizer | 68P81080C43-C | | | | |
| | | Controller, ASFIC/Audio Block Diagram/Main Controller | 68P81083C20-B | | | | |
| SPI_TX_DATA | IF1-3-4 | Receiver IF | 68P81080C43-C | | | | |

Table 2: Schematic Diagram Interconnection List

| From | | | | To | | | |
|---------------------------------------|----------|--|-----------------|-------------|----------|-------------------------|-----------------|
| Signal Name | Node No. | Schematic Diagram Title | Publication No. | Signal Name | Node No. | Schematic Diagram Title | Publication No. |
| | IF3-3-3 | Receiver IF | 68P81080C43-C | | | | |
| | IF4-3-9 | Receiver IF | 68P81080C43-C | | | | |
| | | Receiver Back End | 68P81080C43-C | | | | |
| | | Synthesizer | 68P81080C43-C | | | | |
| | | Controller, Power Control/Main Controller | 68P81083C20-B | | | | |
| | | | 68P81083C20-B | | | | |
| | | Controller/Main Controller | 68P81083C20-B | | | | |
| RSSI | IF1-3-3 | Receiver IF | 68P81080C43-C | | | | |
| | IF3-3-7 | Receiver IF | 68P81080C43-C | | | | |
| | | Receiver Back End | 68P81080C43-C | | | | |
| | | Controller, ASFIC/Audio Block Diagram/Main Controller | 68P81083C20-B | | | | |
| | | Controller, Hear Clear/Audio Block Diagram/Main Controller | 68P81083C20-B | | | | |
| | | Controller, IO RSSI Buffers/Controller Interface/Main Controller | 68P81083C20-B | | | | |
| | | Controller/Main Controller | 68P81083C20-B | | | | |
| | | | | | | | |
| Connector Signals: | | | | | | | |
| Option Connectors J0401, J0408 | | | | | | | |
| A+_CONT | | Controller Interface | 68P81083C20-B | | | | |
| Vdd | | Controller Interface | 68P81083C20-B | | | | |
| 2.1MHZ | | Controller Interface | 68P81083C20-B | | | | |

Table 2: Schematic Diagram Interconnection List

| From | | | | To | | | |
|--|----------|-------------------------|-----------------|-------------|----------|-------------------------|-----------------|
| Signal Name | Node No. | Schematic Diagram Title | Publication No. | Signal Name | Node No. | Schematic Diagram Title | Publication No. |
| GND | | Controller Interface | 68P81083C20-B | | | | |
| DISC | | Controller Interface | 68P81083C20-B | | | | |
| 9.3V | | Controller Interface | 68P81083C20-B | | | | |
| ASFIC_PREAM P_OUT | | Controller Interface | 68P81083C20-B | | | | |
| ASFIC_MIC_AU DIO_IN | | Controller Interface | 68P81083C20-B | | | | |
| AUX_RX_IN1 - J0401. AUX_RX_IN3 - J0408 | | Controller Interface | 68P81083C20-B | | | | |
| UNIV_IO | | Controller Interface | 68P81083C20-B | | | | |
| GND | | Controller Interface | 68P81083C20-B | | | | |
| RESET* | | Controller Interface | 68P81083C20-B | | | | |
| CTRL_HD2:KEY _FAIL | | Controller Interface | 68P81083C20-B | | | | |
| AUX_TX_IN1 - J0401, AUX_TX_IN3 - J0408. | | Controller Interface | 68P81083C20-B | | | | |
| GND:RX_DATA _KID | | Controller Interface | 68P81083C20-B | | | | |
| CLK:RTS_DVP_ WE | | Controller Interface | 68P81083C20-B | | | | |
| CLK | | Controller Interface | 68P81083C20-B | | | | |
| SPI_TX_DATA | | Controller Interface | 68P81083C20-B | | | | |
| SPI_RX_DATA | | Controller Interface | 68P81083C20-B | | | | |

Table 2: Schematic Diagram Interconnection List

| From | | | | To | | | |
|---------------------------------------|----------|-------------------------|-----------------|-------------|----------|-------------------------|-----------------|
| Signal Name | Node No. | Schematic Diagram Title | Publication No. | Signal Name | Node No. | Schematic Diagram Title | Publication No. |
| O:JABBA_INT_ C:DTMF_DATA _READY | | Controller Interface | 68P81083C20-B | | | | |
| O:JABBA_SEL_ C:DTMF_SEL | | Controller Interface | 68P81083C20-B | | | | |
| ASN_INT_OPT_ TX | | Controller Interface | 68P81083C20-B | | | | |
| ASN_SEL_OPT _CTSS | | Controller Interface | 68P81083C20-B | | | | |
| NC | | Controller Interface | 68P81083C20-B | | | | |
| RSSI | | Controller Interface | 68P81083C20-B | | | | |
| GND | | Controller Interface | 68P81083C20-B | | | | |
| GND | | Controller Interface | 68P81083C20-B | | | | |
| Accessory Connector J0403 | | | | | | | |
| SPK+ | | Controller Interface | 68P81083C20-B | | | | |
| INT_SPK+ | | Controller Interface | 68P81083C20-B | | | | |
| SPK- | | Controller Interface | 68P81083C20-B | | | | |
| GND | | Controller Interface | 68P81083C20-B | | | | |
| BUSY | | Controller Interface | 68P81083C20-B | | | | |
| BUS+ | | Controller Interface | 68P81083C20-B | | | | |
| IO_6 | | Controller Interface | 68P81083C20-B | | | | |
| IO_5 | | Controller Interface | 68P81083C20-B | | | | |
| EMERGENCY | | Controller Interface | 68P81083C20-B | | | | |
| GND | | Controller Interface | 68P81083C20-B | | | | |

Table 2: Schematic Diagram Interconnection List

| From | | | | To | | | |
|-------------------------------------|----------|-------------------------|-----------------|-------------|----------|-------------------------|-----------------|
| Signal Name | Node No. | Schematic Diagram Title | Publication No. | Signal Name | Node No. | Schematic Diagram Title | Publication No. |
| RX_HI:FIL_AUD IO | | Controller Interface | 68P81083C20-B | | | | |
| AUX_RX_IN2 | | Controller Interface | 68P81083C20-B | | | | |
| MIC_IN | | Controller Interface | 68P81083C20-B | | | | |
| SW_B+ | | Controller Interface | 68P81083C20-B | | | | |
| IGNITION | | Controller Interface | 68P81083C20-B | | | | |
| IO_2 | | Controller Interface | 68P81083C20-B | | | | |
| RESET | | Controller Interface | 68P81083C20-B | | | | |
| BUS- | | Controller Interface | 68P81083C20-B | | | | |
| SCI_RX_DATA | | Controller Interface | 68P81083C20-B | | | | |
| IO_4 | | Controller Interface | 68P81083C20-B | | | | |
| IO_3 | | Controller Interface | 68P81083C20-B | | | | |
| RSSI_OUT | | Controller Interface | 68P81083C20-B | | | | |
| EXTERNAL_MI C_IN | | Controller Interface | 68P81083C20-B | | | | |
| AUX_TX_IN2 | | Controller Interface | 68P81083C20-B | | | | |
| BUFFERED_ DISCRIMINA- TOR | | Controller Interface | 68P81083C20-B | | | | |
| | | | | | | | |
| Control Head Connector J0405 | | | | | | | |
| INT_SPK+ | | Controller Interface | 68P81083C20-B | | | | |
| SPK- | | Controller Interface | 68P81083C20-B | | | | |
| MON_BUSY:RE SET | | Controller Interface | 68P81083C20-B | | | | |

Table 2: Schematic Diagram Interconnection List

| From | | | | To | | | |
|------------------------------------|----------|-------------------------|-----------------|-------------|----------|-------------------------|-----------------|
| Signal Name | Node No. | Schematic Diagram Title | Publication No. | Signal Name | Node No. | Schematic Diagram Title | Publication No. |
| PTT:BUS- | | Controller Interface | 68P81083C20-B | | | | |
| BUF_SPI_CLK: GND | | Controller Interface | 68P81083C20-B | | | | |
| BUF_SPI_DATA :SECURE_ SELECT | | Controller Interface | 68P81083C20-B | | | | |
| GND | | Controller Interface | 68P81083C20-B | | | | |
| RX_HI | | Controller Interface | 68P81083C20-B | | | | |
| MIC_IN | | Controller Interface | 68P81083C20-B | | | | |
| CTRL_HD1:WE | | Controller Interface | 68P81083C20-B | | | | |
| CTRL_HD2:KEY _FAIL | | Controller Interface | 68P81083C20-B | | | | |
| CH_EN:KID | | Controller Interface | 68P81083C20-B | | | | |
| VOLUME | | Controller Interface | 68P81083C20-B | | | | |
| OPT_SW_B+:B USY | | Controller Interface | 68P81083C20-B | | | | |
| AUX:BUS+ | | Controller Interface | 68P81083C20-B | | | | |
| SW_5V | | Controller Interface | 68P81083C20-B | | | | |
| A+ | | Controller Interface | 68P81083C20-B | | | | |
| SW_B+ | | Controller Interface | 68P81083C20-B | | | | |

Cut along dotted line

SERVICE MANUAL QUESTIONNAIRE

We believe that reports from users provide valuable information for producing quality manuals. By taking a few moments to answer the following questions as they relate to this specific manual, you can take an active role in the continuing effort to ensure that our manuals contain the most accurate and complete information of benefit to you. Thank you for your cooperation.

In reference to Manual Number: 68P81080C43-C

MCS 2000™ Mobile Radio

1. Please check all the appropriate boxes:

| | Complete | Incomplete | Correct | Incorrect | Clear | Confusing | Size Adequate | Size Too Small | Not Covered in This Manual |
|--------------------------|----------|------------|---------|-----------|-------|-----------|---------------|----------------|----------------------------|
| Disassembly Procedures | | | | | | | | | |
| Alignment Procedures | | | | | | | | | |
| Exploded Views | | | | | | | | | |
| Schematic Diagrams | | | | | | | | | |
| Circuit Board Details | | | | | | | | | |
| Electrical Parts Lists | | | | | | | | | |
| Exploded View Parts List | | | | | | | | | |

2. How would you rate the overall organization of this manual?

- excellent
 very good
 good
 fair
 poor

3. Did this Service manual provide you with the information necessary to service and maintain the specific equipment?

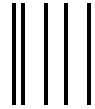
- very much so
 generally yes
 to some extent
 no

4. How do you rate this particular Service Manual?

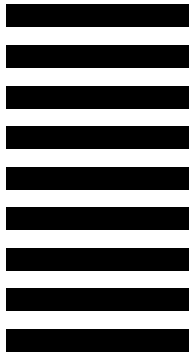
- excellent
 very good
 good
 fair
 poor

5. We would appreciate any corrections or recommendations for improving this manual. Please include the specific page number(s) of the diagram or procedure in question.

- a. Disassembly Procedures:(Page No. _____)
- b. Alignment Procedures:(Page No. _____)
- c. Exploded Views:(Page No. _____)



NO POSTAGE
NECESSARY
IF MAILED
IN THE
UNITED STATES



BUSINESS REPLY MAIL
FIRST CLASS MAIL PERMIT NO 9040 FT. LAUDERDALE, FL

POSTAGE WILL BE PAID BY ADDRESSEE



MOTOROLA

Attention: Media and Communication
8000 W. Sunrise Boulevard
Ft. Lauderdale, FL 33322



FOLD

FOLD

(Continued)

Please specify the page number along with any corrections or recommendations for improvement.

- d. Schematic Diagrams: (Page No. _____)
- e. Component Location Details: (Page No. _____)
- f. Electrical Parts List: (Page No. _____)
- g. Exploded View Parts List: (Page No. _____)

6. General comments/suggestions:

Name:.....

Company:.....

Customer COSC MSS FTR Other

Address:

City/State/Zip:.....

Phone Number (Please include Area Code):

PLEASE USE TAPE TO SEAL

POSTAL REGULATIONS PROHIBIT USE OF STAPLES

REPLACEMENT PARTS ORDERING

ORDERING INFORMATION

When ordering replacement parts or equipment information, the complete identification number should be included. This applies to all components, kits, and chassis. If the component part number is not known, the order should include the number of the chassis or kit of which it is a part, and sufficient description of the desired component to identify it.

Crystal and channel element orders should specify the crystal or channel element type number, crystal and carrier frequency, and the model number in which the part is used.

MAIL ORDERS

Send written orders to the following addresses:

Replacement Parts/
Test Equipment/Manuals/
Crystal Service Items:

Motorola Inc.
United States and Canada
Accessories and Aftermarket
Division
Attention: Order Processing
1313 E. Algonquin Road
Schaumburg, IL 60196

Federal Government Orders:

Motorola Inc.
United States and Canada
Accessories and Aftermarket
Division
Attention: Order Processing
7230 Parkway Drive
Landover, MD 21076

International Orders:

Motorola Inc.
United States and Canada
Accessories and Aftermarket
Division
Attention: International Order
Processing
1313 E. Algonquin Road
Schaumburg, IL 60196

TELEPHONE ORDERS

United States and Canada Accessories and Aftermarket Division:
Call: 1-800-422-4210
1-800-826-1913 (For Federal Government Orders)
1-847-538-8023 (International Orders)

Servicers Training (VHS Video Tapes):
Call: 847-576-2828

FAX ORDERS

United States and Canada Accessories and Aftermarket Division:
FAX: 847-538-8198 (Domestic)
847-576-3023 (International)
Parts ID: 847-538-8194

Federal Government Orders:
FAX: 410-712-4991
International: 410-712-6200

PARTS CUSTOMER SERVICE

United States and Canada Accessories and
Aftermarket Division:
Call: 1-800-422-4210
Parts Identification:
Call: 847-538-0021

PRODUCT CUSTOMER SERVICE

Customer Response Center
(Sales and Service Assistance):
Call: 1-800-247-2346
FAX: 1-800-232-9272



**MCS 2000 Mobile Radio Service Instructions
800-MHz Frequency Range Specific
Publication Number 68P81080C43-C**



6881080C43-C